

20810

08-12 INFINITI
G-37 COUPE



20810

08-12 INFINITI
G-37 COUPE

BILLET INSERT

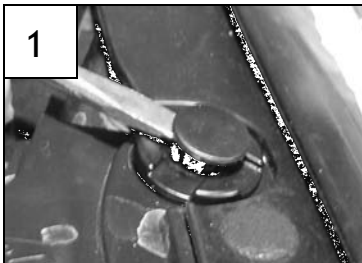
Tools Required:

Phillip / Slotted Screwdrivers
10mm Socket

Hardware / Parts List:

1	Billet Insert	2	#10 Flat Washers
2	2" Machine Screws	2	Plastic Push Clips
2	6/32 Nylon Lock Nuts		

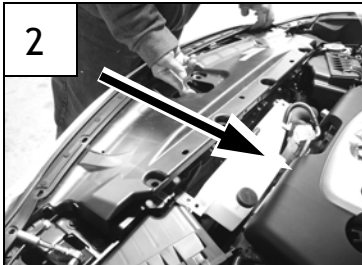
Read and understand instructions before attempting installation



Step 1

Remove six plastic fasteners along the top of the grille; use a small screwdriver to pull the center from each fastener (1). Remove five 10mm bolts securing the radiator cover.

Remove two 10mm bolts securing the coolant overflow tank; slide it back for clearance (2). Next, push the radiator cover back; depress the clips securing a wiring harness to the cover, remove (2).

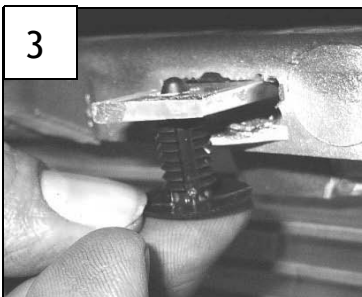


Remove five 10mm bolts behind the grille. Depress the molded clips retaining the grille and remove from the front.

If installing a bumper billet, install the bumper billet and then go to **Step 2** below.

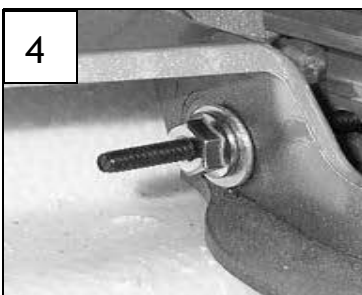
Step 2

Center the billet insert into the opening. The mounting tabs on top align with the factory mounting holes.



Slide the upper brackets into the mounting holes (it may be necessary to slightly bend the upper brackets so they align correctly). Use the plastic push clips to retain the upper mounting tabs (3).

On the lower tabs, from the front side of the grille, place the machine screw through the grille and the lower bottom factory grille mount. From the backside of the grille, while holding the machine screw, place a flat washer and a nylon lock nut on the screw (4). Repeat this on the other screw.



Making sure the grille is centered, tighten the hardware.

Step 3

Re-install the wiring harness and radiator cover. Secure the coolant overflow tank. ***Thank you for purchasing your T-Rex billet grille. 12/19/07***