

# T-REX

## GRILLES



## BILLET SERIES GRILLE

MAIN GRILLE - #21213, AND #21213B

2019-2021 GMC SIERRA 1500

ALL RIGHTS RESERVED - COPYRIGHT ©2020 - T-REX TRUCK PRODUCTS, INC.

### PARTS INCLUDED

- 5 Piece Billet Overlay - Part # 21213 (Polished) or
- 5 Piece Billet Overlay - Part # 21213B (Black)

### HARDWARE INCLUDED

- (16) - #8 Oval Screws
- (12) - #8 U-Nut / Black Speed Nuts
- (12) - "J" Hook Brackets
- (4) - #8 Flat Nuts

### TOOLS REQUIRED

- Prying Tool
- Screw Drivers
- Various Socket Set
- Various Wrenches
- Ratchet Tool
- Ratchet Extensions

### INSTALLATION GUIDE

#### BEFORE YOU BEGIN

PLEASE READ AND UNDERSTAND ALL INSTRUCTIONS BEFORE INSTALLATION. Auto makers offer varied models to each vehicle and occasionally manufacture more than one body style of the same model. To assure your part is correct; our tech department can be contacted at [tech@trexbillet.com](mailto:tech@trexbillet.com) to verify fitment and assist with technical questions. All other inquires can be directed to [info@trexbillet.com](mailto:info@trexbillet.com). In the event you do not have internet access please call 1-800-287-5900.

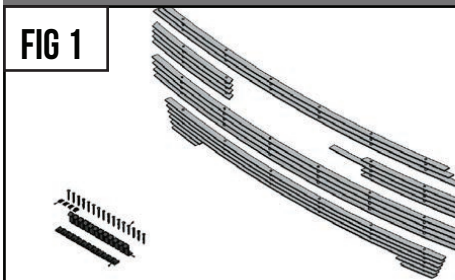
\* APPLICATION MODELS VARY. WE RECOMMEND TO VERIFY FITMENT BEFORE BEGINNING INSTALLATION PROCESS.  
\* IMAGES FEATURED IN THE INSTRUCTION DOCUMENTS MAY NOT ALWAYS EXACTLY MATCH YOUR MODEL OR PART.

#### START HERE

Turn off engine, chalk tires with stop block, open the hood and disconnect the battery.

#### LED LIGHT BRACKET INSTALLATION

FIG 1



#### STEP 1

1) Open and unbox the package. Sort out all components and hardware pack.

#### STEP 2

2) Take the top Billet Piece (3 Bars) and put into position the Billet Grille over and onto the top OEM grille opening.

#### SEE FIGURE 2

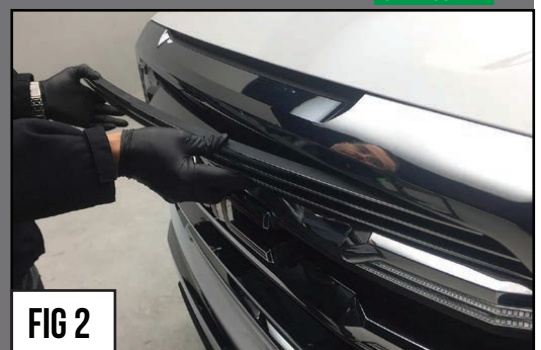


FIG 2

# T-REX

## GRILLES

### GRILLE INSTALLATION - CONTINUED

ALL RIGHTS RESERVED - COPYRIGHT ©2020 - T-REX TRUCK PRODUCTS, INC.

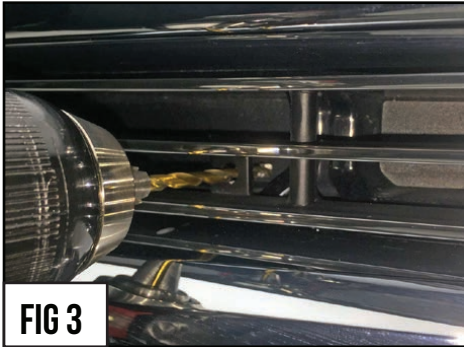


FIG 3



FIG 4



FIG 5

#### STEP 3

#### SEE FIGURES 3 & 4

3) With the T-REX Billet Grille properly centered in the OEM Grille opening, use the pre-determined mounting point to locate where to drill. Mark this location. Remove T-REX Grille and drill the OEM Grille Shell with a 3/16" Drill Bit.

#### STEP 4

4) Repeat as necessary for all the pre-determined mounting points along the top Billet Piece.

#### STEP 5

#### SEE FIGURE 5

5) Now it is time to gain access behind OEM Grille. Remove the bolts that holds Grille Shell onto core support. With the bolts removed, pull up the Grille Shell.



FIG 6

#### STEP 6

#### SEE FIGURE 6

6) Put the top Billet Piece and put it back into place in the top grille opening. Take one of the #8 Screws and a Flange Nut.

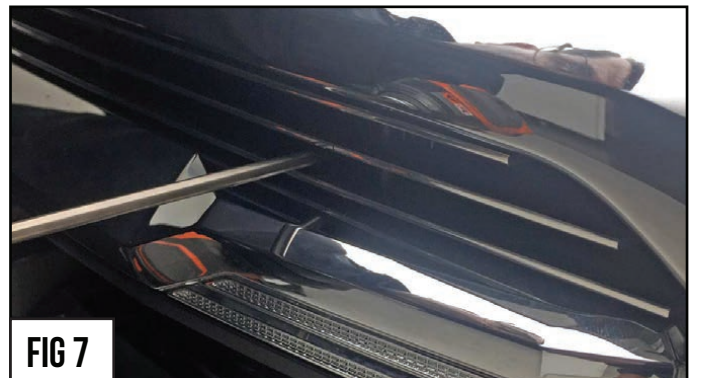


FIG 7

#### STEP 7

#### SEE FIGURE 7 & 8

7) Secure the T-REX Grille top Billet Piece in place using the #8 Screw from the front and tighten into the Flange Nut from behind OEM Grille Shell as seen in Figures #7 and #8.

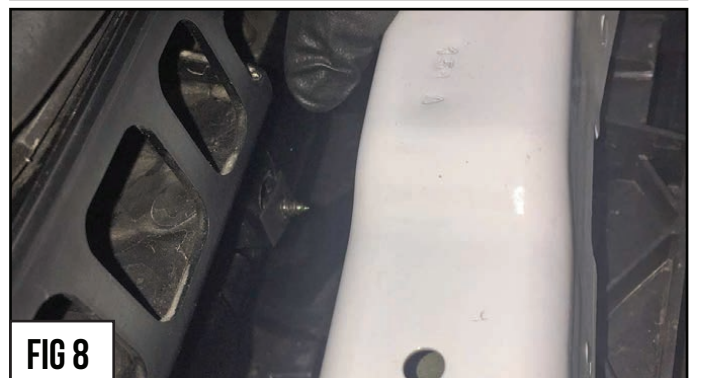


FIG 8

### GRILLE INSTALLATION - CONTINUED

# T-REX

## GRILLES

### GRILLE INSTALLATION - CONTINUED

ALL RIGHTS RESERVED - COPYRIGHT ©2020 - T-REX TRUCK PRODUCTS, INC.



FIG 9



FIG 10



FIG 11

#### STEP 8

SEE FIGURE 9

8) For the next T-REX Billet Grille, moving from the top down, you will have to assemble the U-Nuts with the J Hook Brackets. Slip the U-Nut onto and over the J Hook as seen in Figure #9. Do this and assemble all the U-Nuts onto the J Hooks.

#### STEP 9

SEE FIGURE 10

9) Put into place the #8 Screws in the pre-determined Billet Grille Mounting Point., and then thread on the previously assembled U-Nut / J Hooks. Insert the screws into all Grille Mounting Points.

Note the J Hooks proper orientation as seen in Figure #10.

#### STEP 10

SEE FIGURE 11 - 13

10) Put all of the T-REX Billet Grille Pieces into place in each of the Grille Openings. Secure them into position by tightening the screws. As the screws are tightened the J Hooks will need to be positioned to work as a clamp and fix itself to the Grille Shell.

A prying tool will help control the hardware until it can be properly positioned and tightened as seen in Figure #12.



FIG 12

#### STEP 11

SEE FIGURE 13

11) Continue for each of the T-REX Billet Grille pieces until all is properly installed.

Check your work and confirm that each J Hook is properly fixed into position and securely holding the Grille Overlay in place.

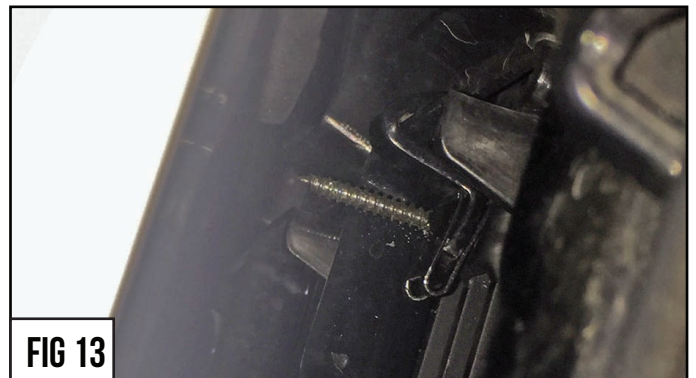


FIG 13

#### STEP 12

SEE FIGURE 14

12) Return the OEM Grille Shell into the proper position. It should be easily popped or pushed back into place. Secure and tighten the bolts that were removed in Step # 5.



FIG 14

### GRILLE INSTALLATION - COMPLETE

# T-REX GRILLES

## INSPECT YOUR WORK

ALL RIGHTS RESERVED - COPYRIGHT ©2020 - T-REX TRUCK PRODUCTS, INC.

### STEP 13

### INSPECT YOUR WORK

13) Carefully inspect your work and make certain all vehicle panels have been installed and align correctly as factory fitment.



GRILLE INSTALLATION - COMPLETE



ALL RIGHTS RESERVED - COPYRIGHT ©2020 - T-REX TRUCK PRODUCTS, INC.

## PRODUCT WARRANTY

### PRODUCT WARRANTY

T-REX Truck Products warrants its grille products to be free from defects in material and workmanship for the lifetime of the grille. T-REX warrants the finish of its grille products for a 3 year period beginning at the time of sale to the end user. These warranties are limited warranties and do not cover abuse, modification or improper installation nor do they cover finish failure caused by caustic cleaning agents, road salts or other chemicals. T-REX reserves the right to repair or replace a defective product at its sole discretion. Any T-REX product must be returned to T-REX for warranty consideration and must be returned at the customer's expense. In the event that the product is deemed to be defective, the repaired or replaced item will be returned via a surface shipping method to the customer at T-REX expense. No provision is made for any labor, rental car or other costs incurred by the failure of its products.

## LED LIGHTING EQUIPMENT INSTALLATION / DISCLAIMER

### WARNING

PLEASE CONSULT YOUR LOCAL AUTOMOTIVE ELECTRICAL PROFESSIONAL FOR INSTALLATION SERVICES AND ADVICE. ZROADZ IS ONLY EQUIPPED TO PROVIDE BASIC TECHNICAL ASSISTANCE DUE TO THE DIVERSITY OF VEHICLES, VEHICLE OPTIONS & MODIFICATIONS AND LIGHTING CONFIGURATION OPTIONS AVAILABLE.

ZROADZ cannot be held liable due to improper component installation and / or faulty wiring.

### GENERAL GUIDELINES

LED Lights & LED Light Bars operate at relatively high currents and should only be installed by qualified personnel with experience in Switched / relayed high draw DC Circuits.

- Light Bars are designed for use only with standard 12v DC power systems
- Light Bars are for OFF-ROAD USE ONLY. Check your local laws & regulations regarding vehicle mounted lights.
- Some Light Bars are equipped with waterproof connectors while others are simply pig-tailed
- Red Wires = POSITIVE | Black Wires = NEGATIVE
- ALWAYS install your lights on a fused circuit. Basic fusing guidelines: maximum 5A for every 10" of LED Light Bar.

### GENERAL USE, INSTALL AND ADJUSTMENT TIPS

NOTE 1: ZROADZ LED Light Bars themselves are for OFF-ROAD USE ONLY.

NOTE 2: Light Bars depending on the configuration of your vehicle and its options and/or modifications may need to be adjusted for appropriate beam projection. To adjust the angle of your light bars simply loosen the mounting hardware on either side of each Light Bar, rotate the Light Bar to adjust the angle, then tighten the hardware once the desired angle is achieved (please be careful not to over-tighten the mounting hardware or scratch the protective powder-coat finish). It is best to adjust the angle with the vehicle on level ground with the lights facing a wall, garage door or other solid barrier at a distance of approximately 25-30 feet.

NOTE 3: Please consult a qualified automotive electrical professional for light bar wiring installation.

NOTE 4: An optional universal wiring harness (part# Z390020S-A) is also available that includes high-heat & oil/fuel resistant wires, waterproof connector, 12v relay, 12v rocker switch, in-line fuse holder. Our universal wiring harness significantly expedites the installation process but is not a vehicles specific "Plug & Play" product and does not eliminate the need for a professional installation.

Please contact your local T-REX dealer for more information or visit [www.TrexGrilles.com](http://www.TrexGrilles.com).

## PRODUCT CARE INFORMATION

### PRODUCT CARE INFORMATION

Wash regularly as you would when caring for your vehicles. Never use dish soap. Never leave wet water spots as that may leave a blemish.

### MATTE BLACK FINISH

Paint warranty applies to defects in material and / or workmanship, it does not cover the matte finish surface appearance. To enjoy the matte appearance for many years to come, please follow these owner care and maintenance tips. Get a no-shine matte car wash soap that uses no fillers, no silicone, and won't strip your matte paint of its layer of protection. Do not use wax, detail spray, armorall®, or any products made for normal paint. Use only products specifically developed for matte finish paint. Do not use products that are even mildly abrasive, such as polishes, glazes, or rubbing compounds. Do not use mechanical cleaners or polishers. Do not use terry cloth, cloth, or paper towels. Do not rub the finish vigorously, this will burnish the paint finish, causing a permanent shiny spot. Shiny spots cannot be removed.

Do not use commercial car wash facilities or their shine enhancement products. Most car wash brushes, large mechanized "towels", and shine enhancement products can damage matte paint.

Remove foreign substances such as insect remains, tar, and road debris using a soft applicator and a mild solvent; saturate and soak area before cleaning - rub lightly.

Hand-wash with a soft wash mitt and mild cleaning product safe for matte paint. Use microfiber cleaning cloths with alcohol-based window cleaner for basic surface clean-up.

### ALUMINUM BRUSHED FINISH

Products with Brushed Aluminum Finish may be cleaned / washed regularly as you would when caring for your vehicles factory finish using soap and water. If any corrosion occurs, which it may overtime from collecting road debris, use soap and water with a Scotch-Brite Heavy Duty Hand Pad 7440 or similar light grit abrasive and the brushed finish will be restored. Never leave wet water spots as that may leave a blemish.