

RUGGED OFF ROAD

2-103

2013 Ram 3500 2WD

2013-17 2500/3500
4WD Only

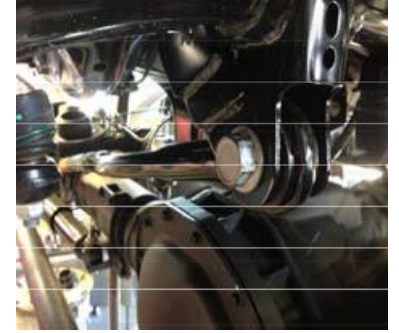
Step by step instructions and checklist: Use the proper tools and safety equipment to perform all work. Torque all fasteners to proper specifications and double check work. Align your vehicle after installation.



Lift the vehicle by the frame. Support the axles and remove the tires.



Unbolt the sway bar end links from the sway bar and fold up out of the way.



Unbolt the track bar from the frame side



Support the front axle. Unbolt the front shocks from the axle.



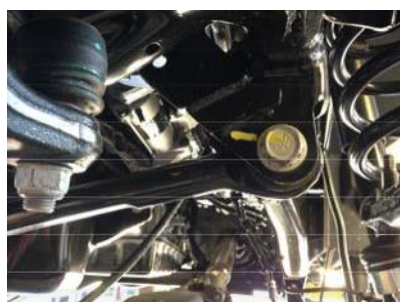
Lower the front axle and remove the coil spring.



Remove the rubber coil pad and snip off the nipple.



Install the spacer, coil pad, and coil spring into the truck.



Re-install the track bar and sway bar ends.

Final Checks & Adjustments

Post Installation Warnings: Once the vehicle is lowered to the ground, check all parts which have rubber or urethane components to insure proper torque. Torque wheels to factory specs. Move vehicle backwards and forwards a short distance to allow suspension components to adjust. Turn the front wheels completely left then right and verify adequate tire, wheel, brake line, and ABS wire clearance. Test and inspect steering, brake and suspension components for tightness and proper operation. Inspect brakes hoses and ABS lines for adequate slack at full

extension. Failure to perform the post inspection checks may result in vehicle component damage and/or personal injury or death to driver and/or passengers. Test drive vehicle and re-check the torque of all fasteners and re-torque wheels on vehicle.

Wheel Alignment/Headlamp Adjustment:

It is necessary to have a proper and professional wheel alignment performed by a certified alignment technician. Align the vehicle to factory specifications. It is recommended that your vehicle alignment be checked after any off-road driving. In addition to your vehicle alignment, for your safety and others, it is necessary to check and adjust your vehicle headlamps for proper aim and alignment.

Vehicle Re-Torque and Safety Inspection:

Upon completion of all services and adjustments performed on your vehicle, and within 50 miles of driving, check to ensure all fasteners and hardware are properly torqued to specification as noted in the vehicles factory service manual or the torque chart included.

www.ruggedoffroad.com 888.670.2252