

RTS14/16CH

2014-17 Chevrolet/GMC 1500 Ext/Crew LD 2015-17 HD Gas/Diesel Installation Instructions

Hardware Kit Includes Loose:

- (A) 16 – Hex head bolts (M8-1.25 x 30mm) Grade 8
- (B) 32 – Lock washers (M8) Grade 8
- (C) 40 – Flat washers (M8) Grade 8
- (D) 16 – Hex head nuts (M8-1.25) Grade 8
- (E) 8 – Hex head bolts (M8-1.25 x20mm) Grade 8
- (F) 8 – Long U-Nuts (M8-1.25)
- (G) 8 – M8 Plastic Push Nuts

Components List:

- (1) 2 – RT Steps (RTS14/16CH)
- (2) 1 – Passenger Front Mounting Bracket (DIESEL ONLY) (RTSPN041)
- (3) 8 – Mounting Brackets (RTSPN033)
- (4) 1 – 1/4" Spacer for RTSPN041 (RTSPN035)
- (5) 8 – 8MM RT Step T-Bolt (RTSPN175)

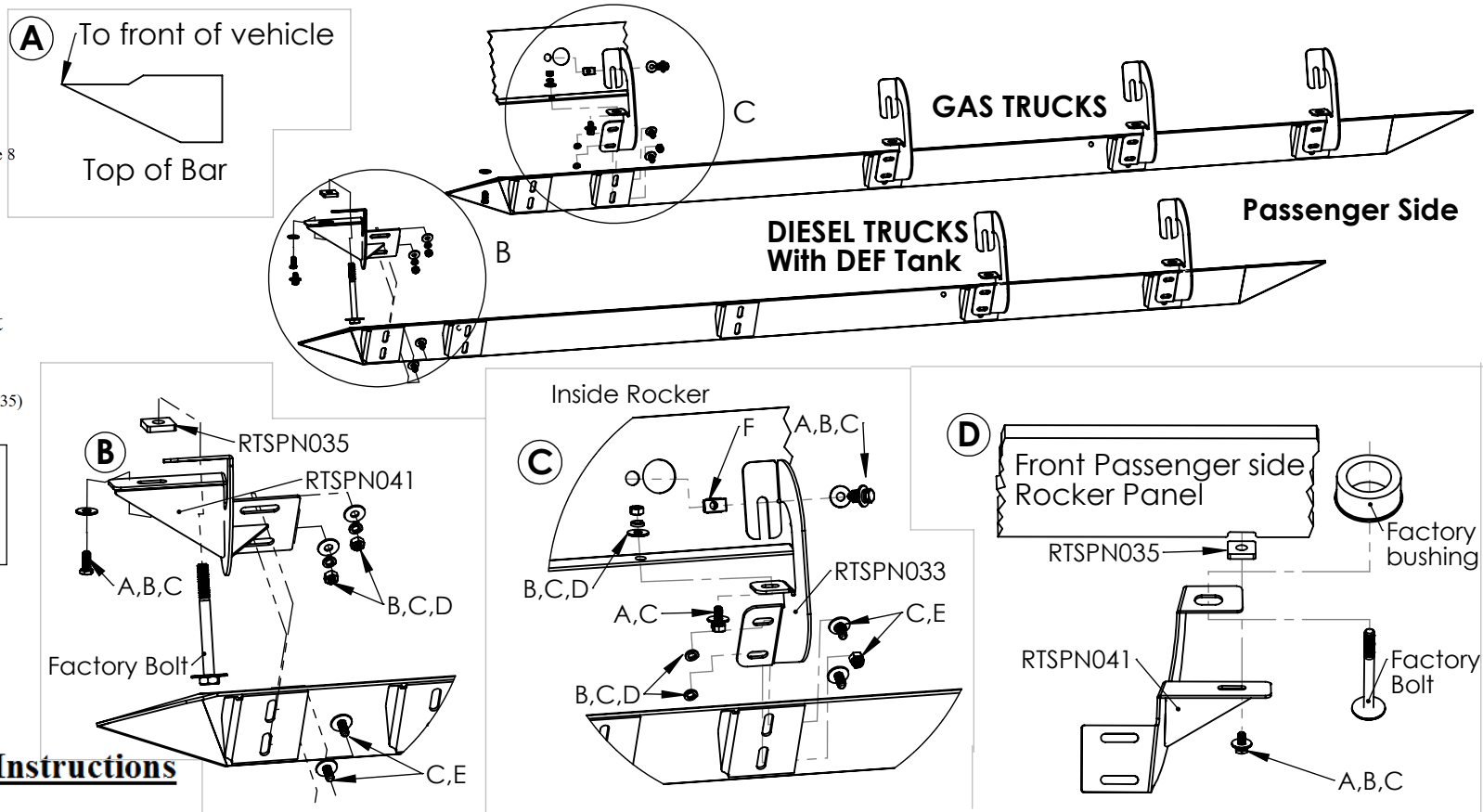
**LOOSE FIT ALL COMPONENTS.
DO NOT TIGHTEN UNTIL ALL
COMPONENTS ARE INSTALLED
AND ADJUSTED.**

**DISCLAIMER: USE ONLY
COMPONENTS AND HARDWARE
SUPPLIED BY ICI.
NO SUBSTITUTIONS.**

**ATTN: STATE OF CALIFORNIA CONSUMERS
WARNING: CANCER AND REPRODUCTIVE HARM
-WWW.P65WARNINGS.CA.GOV**

Step by Step Installation Instructions

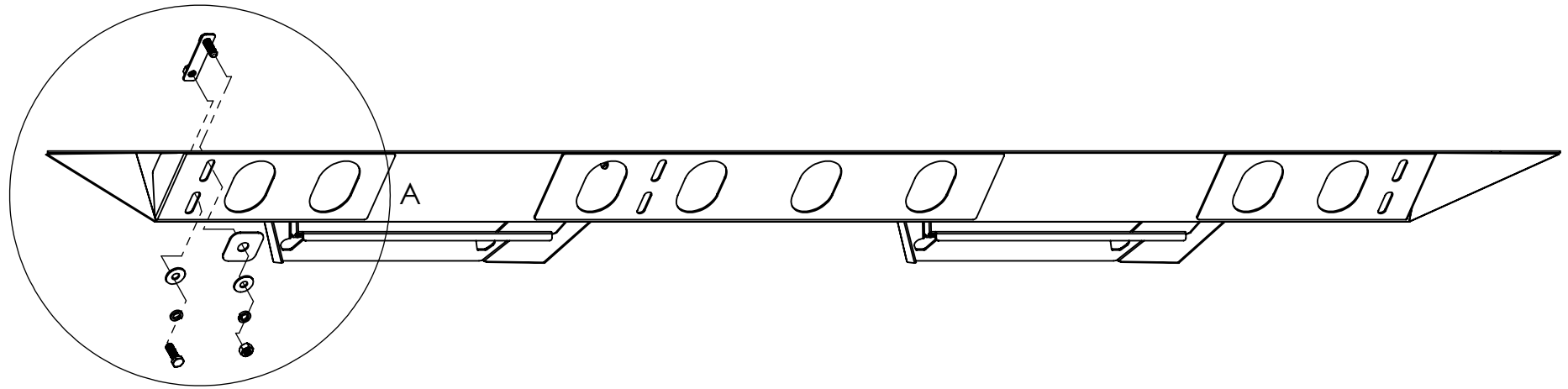
- STEP 1:** Read and understand instructions completely before beginning installation. Remove all old steps and hardware from truck.
- STEP 2:** Locate the driver's side step (the notched end of the RT Step goes to the front of the vehicle). See (fig A).
- STEP 3:** The driver side step on gas and diesel trucks is mounted with (4) RTSPN033 brackets that bolt to the inside rocker panel and pinch weld area. Notice the orientation of the brackets, there are 4 driver side and 4 passenger sides. Some trucks may have threaded inserts in the inside rocker, if not use provided U-Nuts as shown in (fig C). Using provided 8mm bolt, two flat washers, lock washer and nut, bolt RTSPN033 to the pinch weld directly under where the threaded insert is or U-Nut is attached (fig C). If you have either a gas or diesel without DEF tank, mount passenger side brackets the same as driver side and proceed to step 5, if you have a diesel with DEF tank proceed to step 4.
- STEP 4:** The front passenger side bracket on DEF diesel trucks use part RTSPN041, this bracket mounts to the front body mount and pinch weld/fender. Remove front body mount bolt and insert RTSPN041, keep the factory body mount bushing on top of RTSPN041 as shown in (fig D). Once RTSPN041 is attached to the body mount, the other mounting tab will line up with a factory threaded insert in the pinch weld, there may be a bolt in this insert. Remove factory bolt and line up RTSPN041. If RTSPN041 does not fit flush with the bottom of the pinch weld insert provided spacer (RTSPN035) and bolt RTSPN041 into place using provided hardware (fig D). **2014-2015 GMC Diesel trucks with factory fender flare will need to be trimmed for RTSPN041 to fit.**
- STEP 5:** Once RT Step brackets are fitted, loose fit RT Step using provided hardware (fig B & C). Once RT Step is loose fit, tighten brackets to inside rocker (**DO NOT USE IMPACT TOOLS**). Next, adjust bar up/down and front/back then tighten step to brackets.



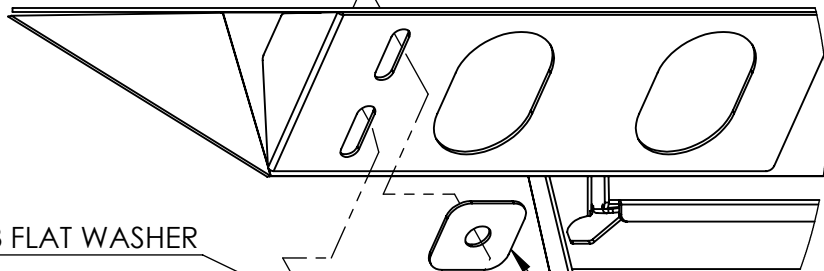
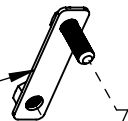
RT STEPS & WHEEL TO WHEEL RT STEPS

04/27/18

ALL MAKES/MODELS OF RT STEPS & W2W RT STEPS (USING RTSPN175 T-BOLT)



RTSPN175 - M8 RT STEP
MOUNTING T-BOLT



M8 FLAT WASHER

M8 LOCK WASHER

M8-1.25 x 20MM
HEX HEAD BOLT

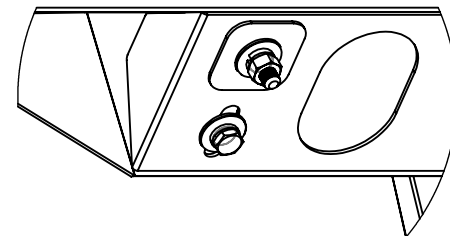


M8 PLASTIC PUSH NUT

M8 FLAT WASHER

M8 LOCK WASHER

M8-1.25 HEX HEAD NUT



RT STEPS & WHEEL TO WHEEL RT STEPS

2017 GM DIESEL TRUCKS

RTS14/16CH

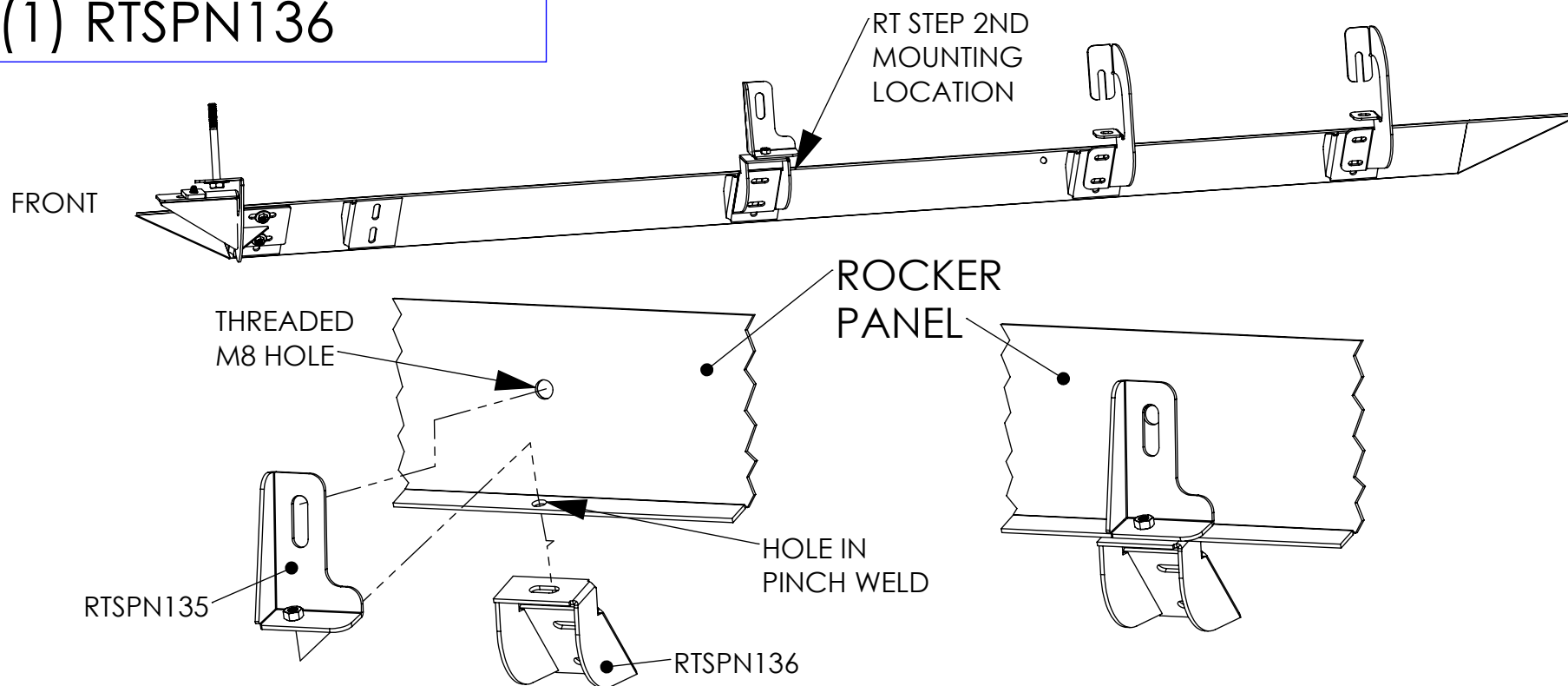
RTW110/111/115CH

2/8/17

PASSENGER SIDE ONLY

1 - (1) RTSPN135

1 - (1) RTSPN136



2017 GM DIESEL TRUCKS WITH DEF TANK

The 2017 diesel trucks have a larger DEF tank mounted to the passenger side frame. Because of this you must use the RTSPN135 and RTSPN136 bracket to mount your RT step bars.

1. It is recommended to install the front, third and fourth mounting brackets and hang the RT step before installing the RTSPN135 and RTSPN136 mounting brackets. Once the RT step is mounted but before anything has been fully tightened, locate the 2nd mounting location from the front of the RT step.
2. First, slide the RTSPN135 between the DEF tank and the rocker panel. The nut attached to the RTSPN135 should line up with a hole in the pinch weld at the 2nd mounting location on the RT step. Once aligned with the hole in the pinch weld, the vertical slot in RTSPN135 will be aligned with a threaded hole in the rocker panel. Using a provided M 8 bolt, lock washer and flat washer, fasten RTSPN135 to the rocker panel.
3. Next, attach RTSPN136 to RTSPN135 with the pinch weld sandwiched between the two using a provided M 8 bolt, lock washer and flat washer.
4. Attach RTSPN136 to the RT step with the provided M 8 hardware. Fully tighten RTSPN135 and RTSPN136 to the rocker panel and each other.
5. Adjust the RT step until satisfied and fully tighten remaining brackets and step.