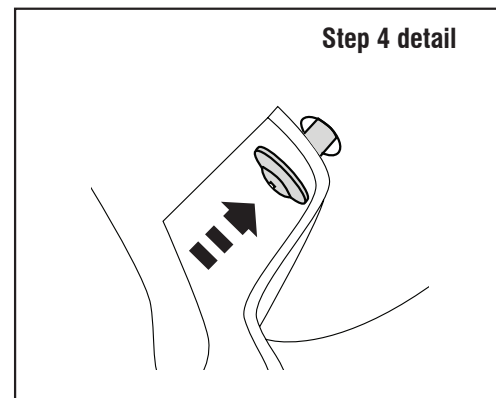
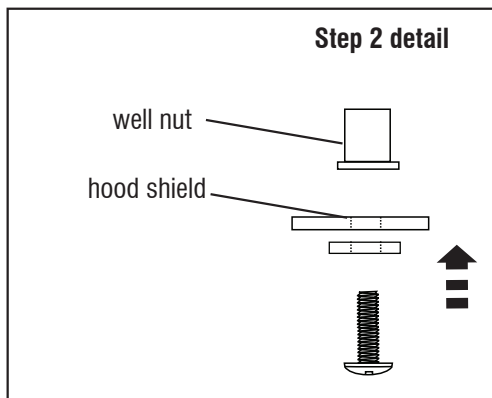
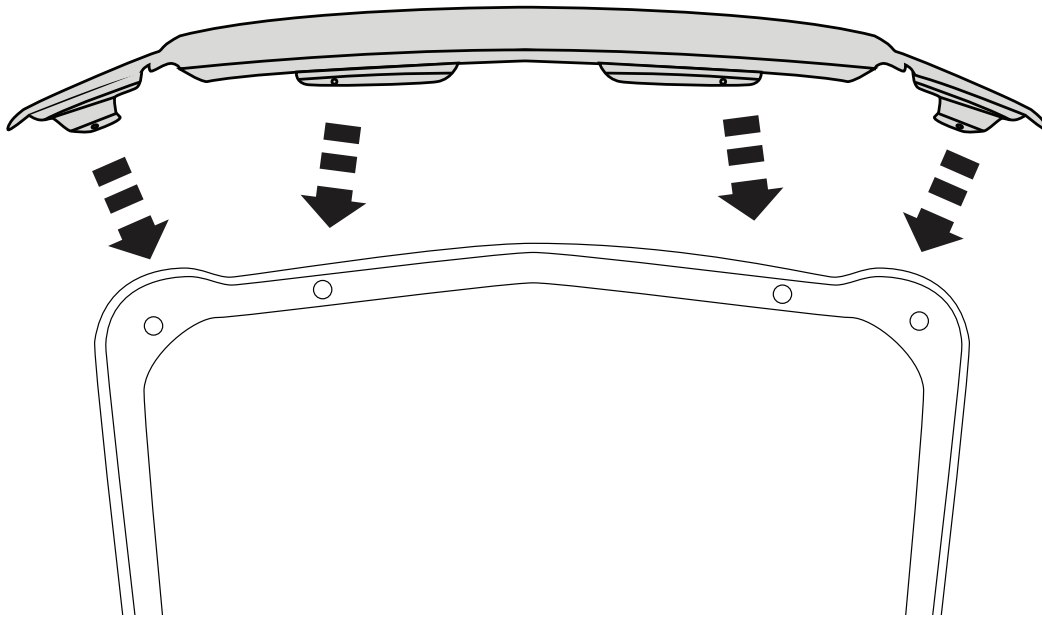


1. Open Hood. Remove (2) bumpers before installation.
2. Assemble fasteners by inserting screw through hood shield and into well nut. Hand tighten. (See detail below.)
3. Center part on front edge of hood and align holes.
4. With well nut inserted into hole in hood, secure hood shield to hood by tightening screw to expand well nut. Repeat for remaining fasteners. **NOTE: DO NOT OVER TIGHTEN** (See detail below.)
5. Close Hood.
6. Apply bump ons to surface of hood.



IMPORTANT: Before driving, ensure the hood shield is properly secured to vehicle. Clean with a **SOFT** cloth and soap and water **ONLY!** Using abrasive cleaners, chemicals, or solvents will **VOID** the warranty on this product.