

IMPORTANT: READ BEFORE INSTALLATION

Step 1: Prior to Installation

- A) Stampede Products only approves installing these Fender Flares according to these written instructions with the hardware provided. **WARNING:** Failure to install according to these instructions will invalidate the warranty. This includes, but not limited to using alternative installation methods, hardware, or materials. **DO NOT USE:** Loctite, SuperGlue, or similar products on the hardware or the flares.
- B) Inspect the Fender Flares thoroughly for defects or damage and verify the contents of package.
- C) Verify the fit of the flares to the vehicle. (Some filing, sanding, or cutting may be necessary to ensure proper fit).
- D) **Painting (Optional): PAINTED FLARES CANNOT BE RETURNED, TEST FIT BEFORE PAINTING.** If painting is desired it must be done prior to installing flares on vehicle. Clean outer surface with a good grade degreaser. **DO NOT USE LACQUER THINNER OR ENAMEL REDUCER AS A DEGREASER.** Wipe outer surface thoroughly with a tack rag prior to paint. Application of plastic adhesion promoter for ABS plastic as per your paint system manufacturer's recommendations is required. Paint flares using a high quality enamel, or polyurethane automotive paint. If painting edge trim (not recommended) use a flex additive.

KIT CONTAINS:
(4) FENDER FLARES
(32) FEET OF EDGE TRIM
(32) DECORATIVE BOLTS NUTS AND*
WASHERS
(8) U-CLIPS
(8) BLACK TABS
(8) SCREWS

TOOLS NEEDED:
#2 PHILLIPS DRIVER
UTILITY KNIFE
7/32" SOCKET
3/16" ALLEN WRENCH*
1/2" WRENCH*

NOTE: FENDER FLARES ARE MARKED ON INSIDE AS TO FITMENT.
1-DRIVER FRONT
2-PASSENGER FRONT
3-DRIVER REAR
4-PASSENGER REAR

*Applies to Bolt-On style flares only

Step 2: Installation

A) Edge Trim Installation:

1. Peel three inches of red backing away from edge trim adhesive and affix to outer edge of flare at one end.
2. Press edge trim into place along edge of flare in one-foot increments, pulling red backing free as you continue to work your way around the flare. **(Figure 1)**

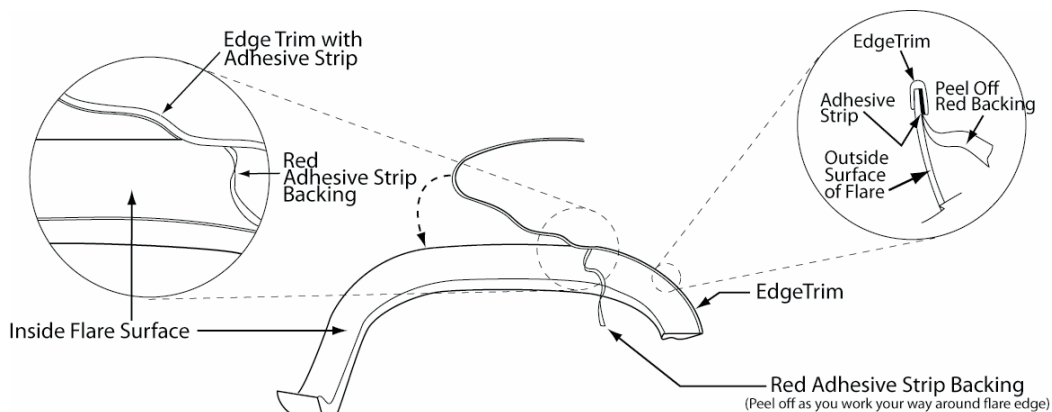


Figure 1

B) Bolt installation: (Applies only to "Bolt-On" style flares)

1. Place a 5/16 button head screw with a washer into each of the holes and attach to the flare using a nut placed on the inside. **(Figure 2)**
2. **Warning: Do not over tighten or use Loctite on the bolts as this will cause permanent damage to the flares. Bolts are decorative only and fasten only to the flares. Do not attempt to use the bolts to fasten the flares to the vehicle.**

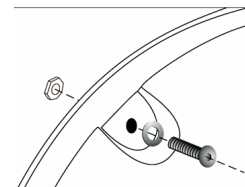


Figure 2

c) Front Flare Installation:

1. Remove factory flares and mud flaps if installed.
2. Remove the three factory screws with 7/32" socket indicated in **Figure 3**. Save for reinstallation.
3. Hold the flare up to vehicle to ensure proper fitment before continuing installation.
4. Install flare with the three factory screws while applying moderate pressure to the outside surface of the flare. **Figure 4**

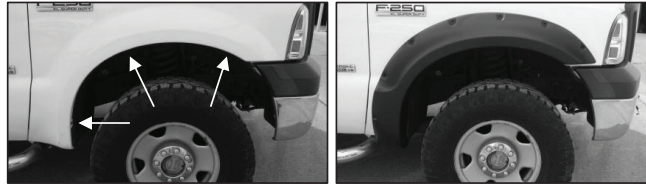


Figure 3

Figure 4

D) Rear Flare Installation:

1. Remove factory flares and mud flaps if installed.
2. Hold the flare up to vehicle to ensure proper fitment before continuing installation.
3. Remove the white backing from the black tabs and install half over the four factory hole locations as shown in **Figure 5** and **Figure 6**. Fold the remaining part of the black tab over the fender lip as shown in **Figure 7**.

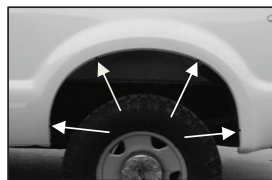


Figure 5

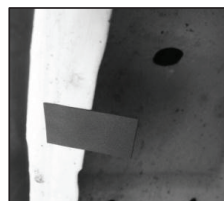


Figure 6



Figure 7

4. Using an awl or similar sharp tool, push through the black tab into the factory holes as shown in **Figure 8**.

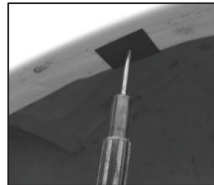


Figure 8

5. Slide the u-clip over the black tabs so they are lined up with the factory hole locations as shown in **Figure 9**.

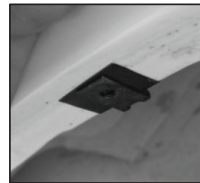


Figure 9

6. Install the flare with the supplied screws while applying moderate pressure to the outside surface of the flare.

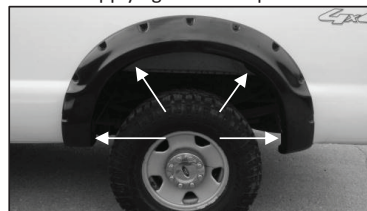


Figure 10