

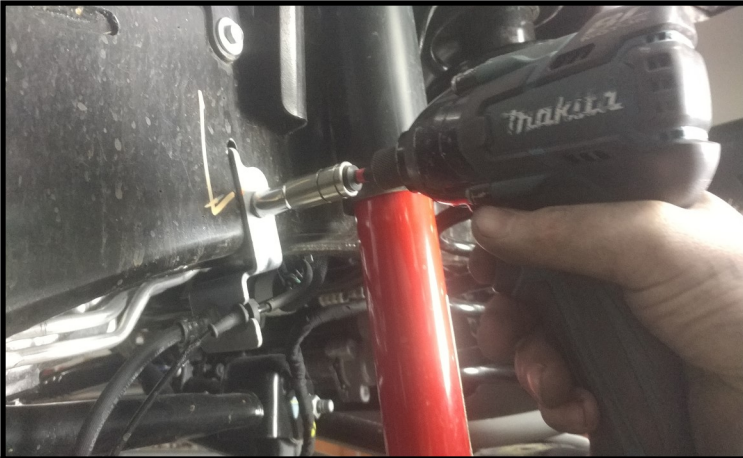


Step by step instructions and checklist:

Use the proper tools and safety equipment to perform all work. Torque all fasteners to proper specifications and double check work. Align your vehicle after installation.

J25SL1 Jeep JL

2.5" Lift



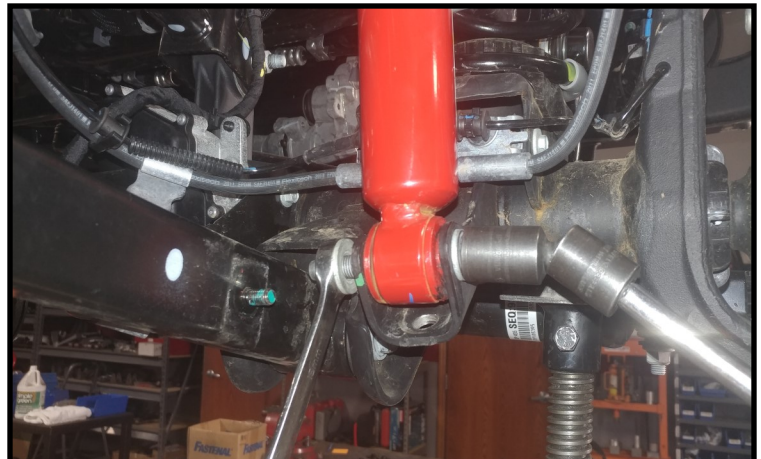
Jack the vehicle up from the front axle. Support the vehicle with jack stands under the frame. Remove the brake line bracket at the frame.



Remove the brake line bracket at the axle.



Remove the lower sway bar end links from the axle.



Remove the lower shock at the axle.



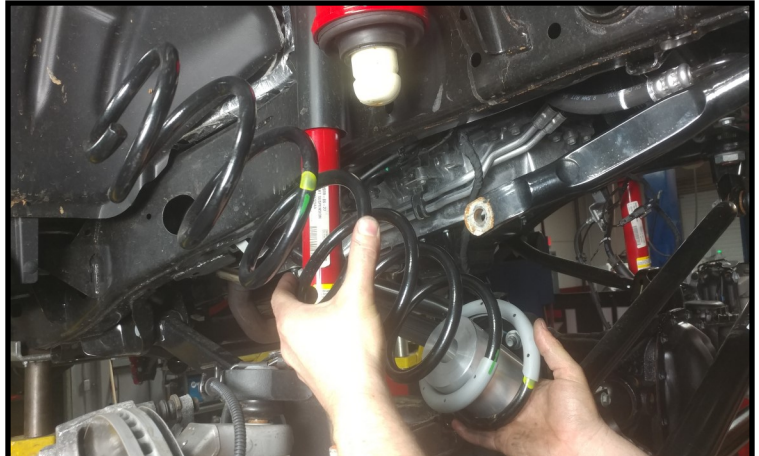
Mark the front drive shaft to pinion. Remove the drive shaft from the pinion. Let hang out of the way.



Lower the axle enough to remove the springs and factory isolator.



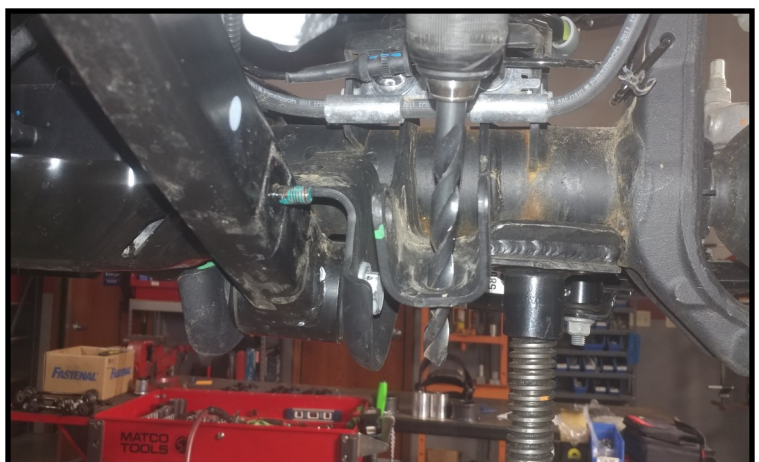
Install the front spring spacer. Then reinstall the factory isolator.



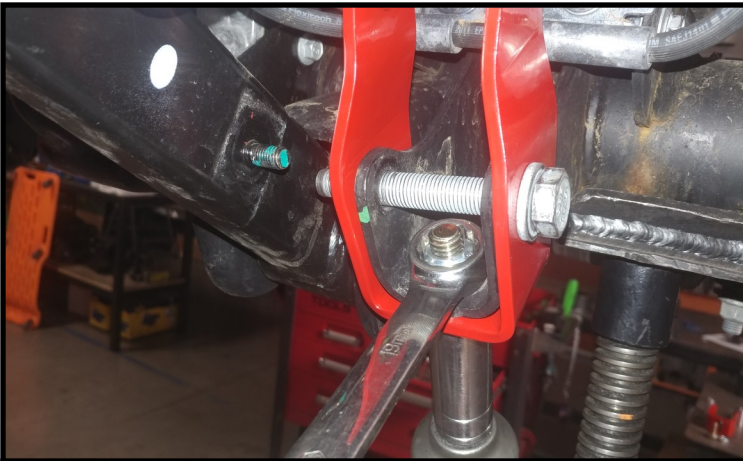
Install the bump stop extension into the spring. Install the spring and bump stop to the axle and frame.



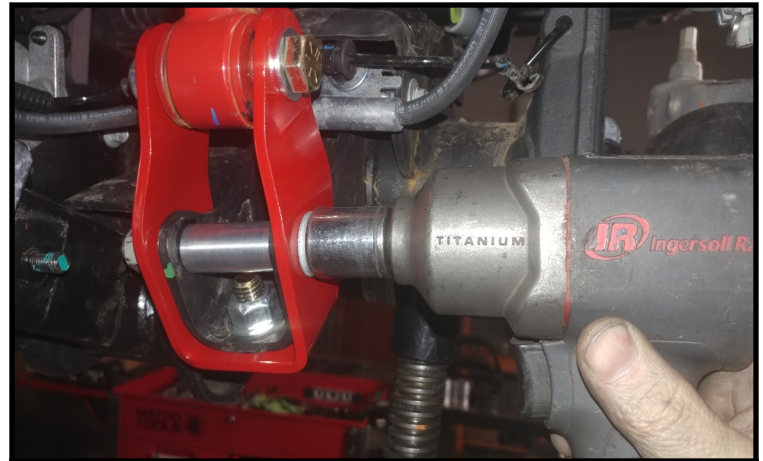
Install the bump stop hardware and tighten.



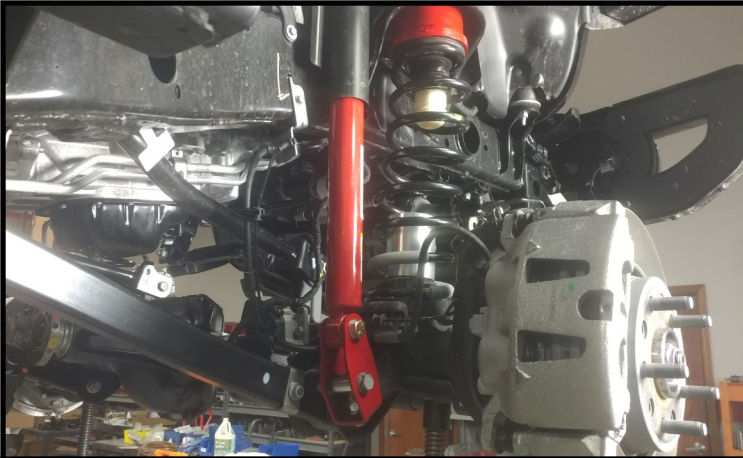
Drill out the lower hole in the shock mount to 1/2".



Install the shock extension using the provided 1/2" hardware. Use the factory hardware as a guide. Only tighten the 1/2" hardware now.



Install the shock to the shock extension using the provided 1/2" hardware. Install the provided crush sleeve and factory hardware. Tighten all.



Install the brake line brackets to the frame and control arm using the factory hardware.



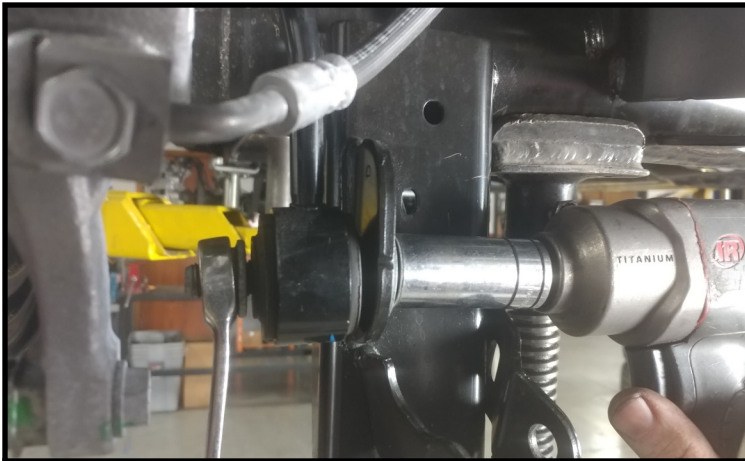
Install the front drive shaft to the pinion using the previously made marks and factory hardware. Use thread locker and tighten.



Rear install: Support the axle with a jack. Remove the wheels. Remove the brake line brackets at the axle.



Remove the lower shock from the axle.



Remove the lower sway bar end link from the axle. Lower the axle enough to remove the springs and isolators.



Install the provided nut plate on top of the spring tower.



Install the spring spacer using the provided hardware to the nut plate.



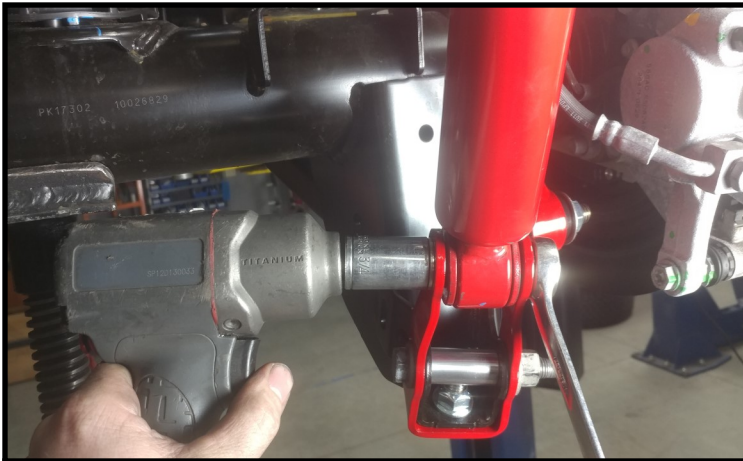
Cut the nipple off the rubber isolator.



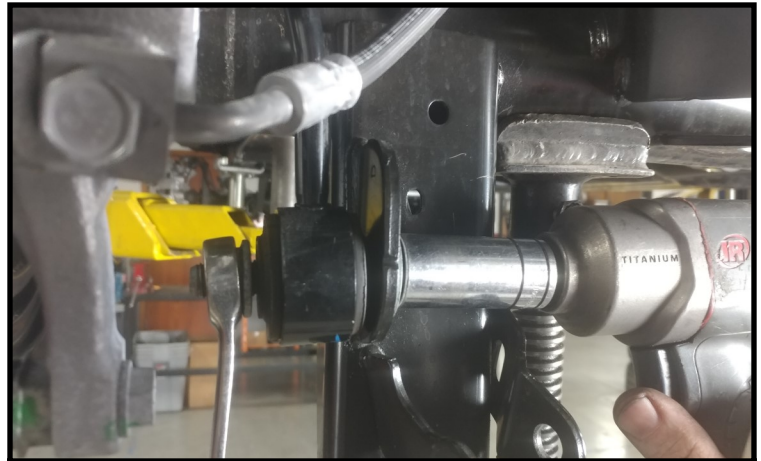
Install the spring and isolator onto the axle and spring spacer. Raise the axle enough to hold all in place.



Install the shock extension using the provided 1/2" hardware. Use the factory hardware as a guide. Only tighten the 1/2" hardware now.



Install the shock to the shock extension using the provided 1/2" hardware. Install the provided crush sleeve and factory hardware.



Install the lower sway bar end link to the axle using the factory hardware.



Install the rear brake line to the axle



Install the rear bump stop extensions using the provided hardware. Install the wheels and lower the vehicle to the ground. Have the align set.

Final Checks & Adjustments

Post Installation Warnings: Once the vehicle is lowered to the ground, check all parts which have rubber or urethane components to ensure proper torque. Torque wheels to the manufacturers specs. Move the vehicle backwards and forwards a short distance to allow suspension components to adjust. Turn the front wheels from lock to lock and verify adequate tire, wheel, brake line, and ABS wire clearances. Test and inspect steering, brake and suspension components for tightness and proper operation. Inspect brake hoses and ABS lines for adequate slack at full extension. Failure to perform the post inspection checks may result in vehicle component damage and/or personal injury or death to driver and/or passengers. Test drive vehicle and re-check the torque of all fasteners.

Wheel Alignment/Headlamp Adjustment

It is necessary to have a proper and professional wheel alignment performed by a certified alignment technician. Align the vehicle to factory or provided specifications. It is recommended that your vehicle alignment be checked after any off-road driving. In addition to your vehicle alignment, for your safety and others, it is necessary to check and adjust your vehicle headlamps for proper aim and alignment.

Vehicle Re-Torque and Safety Inspection

Upon completion of all services and adjustments performed on your vehicle, and within 50 miles of driving, check to ensure that all fasteners and hardware are properly torqued to specification as noted in the vehicles factory service manual.

www.trailfx.com