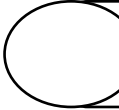




Display Rack – Jeep Bumpers



Part No. QD1000JB



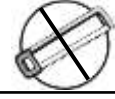
REMOVE CONTENTS FROM BOX. VERIFY ALL PARTS ARE PRESENT.

READ INSTRUCTIONS CAREFULLY BEFORE STARTING INSTALLATION.

PLEASE USE SAFETY GLASSES & ENSURE TO BLOCK VEHICLE MOVEMENT DURING INSTALLATION PROCESS



30-60 min



Cutting Not Required



Drilling Not Required



support@trailfx.com



1 866 638 4870



POLISHED STAINLESS STEEL – LIMITED LIFETIME
POWDER COATED BLACK – 3 YEARS

PARTS LIST

Qty	Part Description	Qty	Part Description
6	Bracket – Display Rack	10	Fixed Plate
2	Mounting Plate 1	74	M12 X 90 Outer Hexagon Bolt
2	Mounting Plate	24	M12 X 30 Outer Hexagon Bolt
2	Mounting plate 3	196	M12 X 25 X 1.5 Flat washer
8	Mounting Plate – Frame	98	M12 Spring Hooks
4	Mounting Plate-JK Rear Bumpers	98	M12 Nut
4	Mounting Plate-JL Rear Bumpers		

Attention:

Periodical inspections should be made for the rack and make sure each part of the bumper link is tight. That can assure safety while using. Avoid using acid-base aqueous solution to wipe the display rack.

INSTALLATION PROCEDURE

1. Assembling the fixed plate

Notice: Before assembling, without any special label, all the locking ways of the bolts will use the **M12 X 90 bolts**

(As shown in the **figure 1 and 2** below)



Figure 1: before assembling

Figure 2: after assembling

1. Choose one group of long brackets and a group of short brackets from **Parts 1** the left brackets should be assembled and fixed in sequence in the same way.(AS shown in the **figure 1**)



Assembling figure 1

2. Choose two symmetric stainless steel fixed plate from **Parts 7**, then assemble them into the accessories **figure 1** (As shown in the **figure 2** below).



Figure 2



Figure 2: After assembled

Notice: Make sure the fixed plate be fixed on the outside of the self-bracket (Both the obverse side and the reverse side should be fixed). All the hole sites on the fixed plate need to be fit in the bolts and be locked tightly. (As shown in the **figure 2** up)

3. Choose one long bracket from **Parts 1**, and then assemble it with the accessories. The way to assemble the short bracket and the long bracket has been stipulated, the assembling picture is as shown in the **figure 1**. Choose two symmetric stainless steel fixed plate from **Part 6**, then fit it into parts of **figure1**. Meanwhile, choose the wider mounting plate from **Parts 2**, the tripod was finished (**As shown in the figure 2**)



Assembling Figure 1

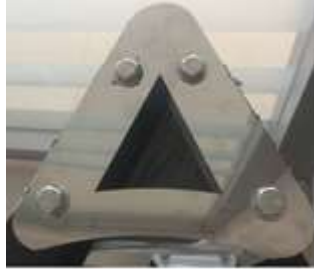


Figure 2



Figure 3: After assembling

4. When the fixed plate on the long and the short bracket and the short bracket were fixed, the bolts should be tightened in sequence from up to down (As shown in figure 2). The other tripod should be assembled according to step 1, 2 and 3.

2. Mounting Plate Assembly

1. Select mounting plate and tripod from Parts 3 and Parts 4 to assemble
(As shown in figure 2)



Figure 1



Figure 2 after assembling

Notice: When the mounting plate of the display rack 2 and the tripod are assembled, the bolt should be fit into the 9th and the 10th hole site and be tightened. The mounting plate of the display rack 3 and the tripod are assembled, the bolt should be fit into the 3rd hole site. (As shown in figure 2 above)

2. Assemble the other tripod which has been assembled before head to the tripod in step 1 with a mounting plate.
(As was shown in figure 2 below)



Figure 1



Figure 2 after assembling

Notice: The tripod and the mounting plate should be aligned to their separate hole site before assembled.
(As was shown in figure 1 up)

THIRD STEP: Assemble the mounting plate of the rod body

1. Choose a mounting plate from Parts 5 to be assembled with the display rack. (As shown in figure 1 below)



Figure 1

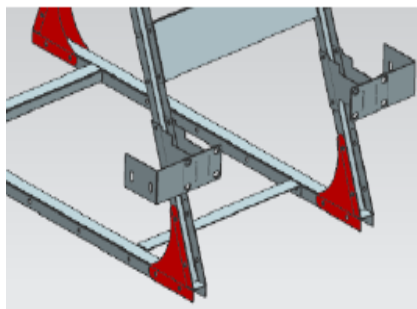


Figure 2



Figure 3

Mounting Plate-JK Rear Bumpers



Mounting Plate-JL Rear Bumpers

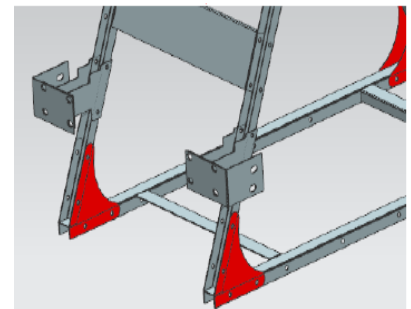
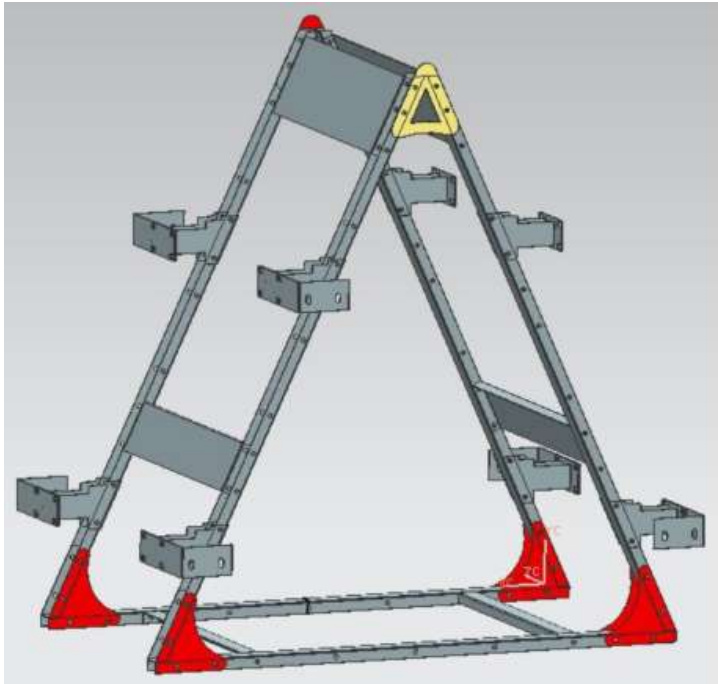


Figure 4

Notice: The mounting plate should cover the outside of the bracket when assembled with the display rack. As shown in figure 1 above. The mounting plate of the rod body should be fit in the 4th, 5th and the 11th, 12th hole side from the top of each long bracket. Each long bracket should be fit two mounting plates and be tightened by M12*30 bolts when loaded with the rear bumper. (As shown in figure 3 and figure 4 above)

3. : The installation of the display rack has been finished.
4. : Adjust the display rack to a suitable position, and then tighten all the bolts.
5. : Inspect if there is any bolts missed or if all the bolts have been tightened.



PRODUCT CARE

1. Periodically check the product to ensure all fasteners are tight and components are intact.
2. Regular waxing is recommended to protect the finish of the product.
3. **Use ONLY Non-Abrasive automotive wax.** Use of any soap, polish or wax that contains an abrasive is detrimental and can scratch the finish leading to corrosion.
4. Aluminum polish may be used to polish small scratches and scuffs for **Stainless Steel finish.**
5. Mild soap may be used to clean the product for both **Stainless Steel and Black finish.**

FAQ's

1. **Products are thumping / rattling after installation.**
Please ensure that all required mounting brackets / hardware's are installed & tighten correctly. Suggest using white lithium / regular grease between the metal to metal contact surfaces.
2. **Missing / Excess Hardware.**
Recheck hardware count as per the part list.
3. **Product not installing properly.**
Ensure make model year, cab length and bed size of your vehicle is listed in the application. All installation steps are followed correctly.

Check out these other TrailFx Products!!

www.FX-Products.com



Keystone Automotive Operations Inc. (KAO) warrants this product to be free of defects in material and workmanship at the time of purchase by the original retail consumer. KAO disclaims any other warranties, express or implied, including the warranty of fitness for a particular purpose or an intended use. If the product is found to be defective, KAO may replace or repair the product at our option, when the product is returned prepaid, with proof of purchase. Alteration to, improper installation, or misuse of this product voids the warranty. KAO's liability is limited to repair or replacement of products found to be defective, and specifically excludes liability for any incidental or consequential loss or damage.