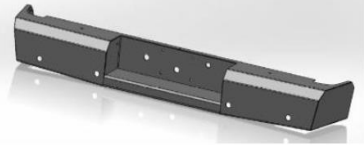




Replacement Rear Bumper

Part No. FX1003



Fits: 2003-2007

Chevrolet Silverado/GMC Sierra 2500/3500 HD



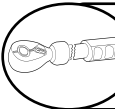
Incl. 2007 Classic
ASSISTANCE IS RECOMMENDED.



REMOVE CONTENTS FROM BOX. VERIFY ALL PARTS ARE PRESENT.



READ INSTRUCTIONS CAREFULLY BEFORE STARTING INSTALLATION.



DO NOT OVER TORQUE. STANDARD OPERATING LOAD FOR TIGHTEN BODY MOUNT NUTS & BOLTS VARIES FROM 45 TO 65 FOOT POUND.



60-180 min



Cutting Not Required



Drilling Not Required



support@trailfx.com



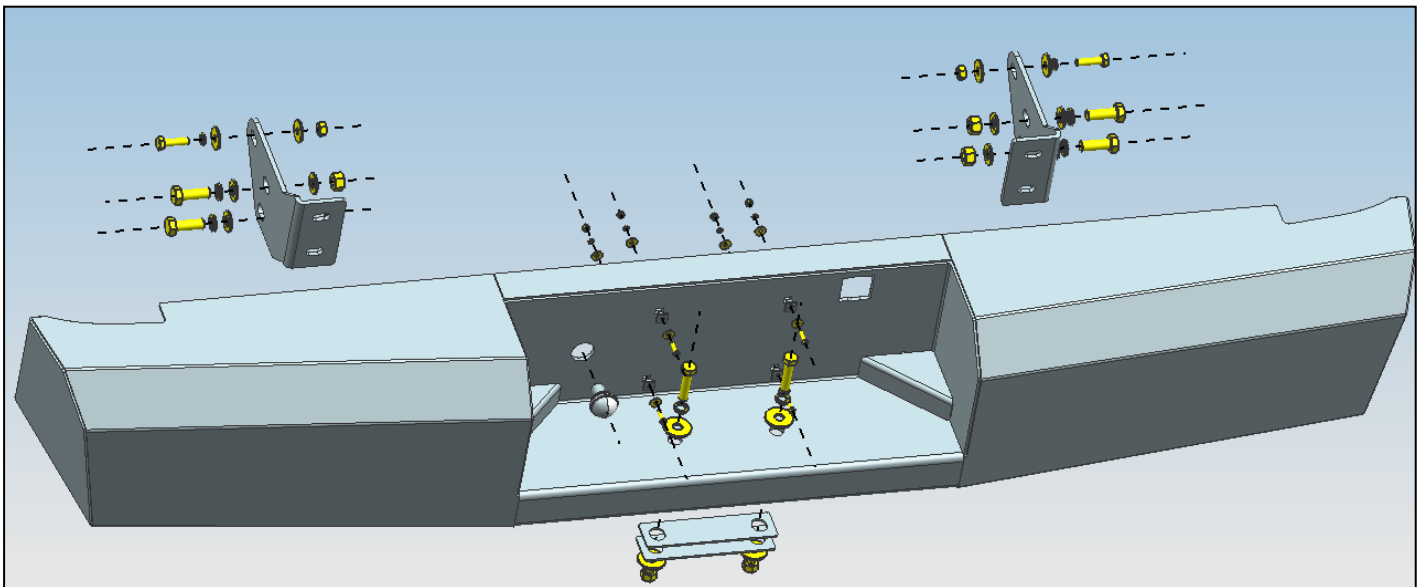
1 866 638 4870



POLISHED STAINLESS STEEL – LIMITED LIFETIME
POWDER COATED BLACK – 3 YEARS

PARTS LIST:

Qty	Part Description	Qty	Part Description
1	Replacement Rear Bumper	1	License Plate Light
1	Driver Side Mounting Bracket	1	Passenger Side Mounting Bracket
2	Spacers	2	License Plate Light Wiring
4	5x20mm Phillips Screws	4	Plastic Plugs
8	5x15x1.2mm Flat Washers	4	5mm Hex Nuts
4	5mm Lock Washers	6	10mm Hex Nuts
2	12mm Hex Nuts	4	14mm Hex Nuts
6	10x35mm Hex Bolts	2	12x50mm Hex Bolts
4	14x40mm Hex Bolts	12	10mm Flat Washers
4	12mm Flat Washers	8	14mm Flat Washers
6	10mm Lock Washers	2	12mm Lock Washers
4	14mm Lock Washers		



INSTALLATION PROCEDURE:

BUMPER IS HEAVY, ASSISTANCE IS HIGHLY RECOMMENDED TO AVOID POSSIBLE INJURY OR DAMAGE TO THE VEHICLE.

Vehicle Preparation

1. Remove license plate and OEM license plate lights. Disconnect trailer receptacle. If equipped unplug back-up sensor harness.
2. Remove the two fasteners connecting the hitch to the stock bumper located on either side of the receiver with an 18mm socket.
3. Remove the fasteners connecting the bumper mounts to the frame. This requires removing one bolt from the bottom of the frame (22mm) and three bolts from the side of the frame (18mm and 15mm) **(Fig 1A & Fig 2)** . Save hardware for reuse.
4. Remove OEM bumper by pulling it rearward away from the truck.
5. Remove OEM spare tire access cover and trailer plug from the OEM bumper. Set aside for reinstallation.



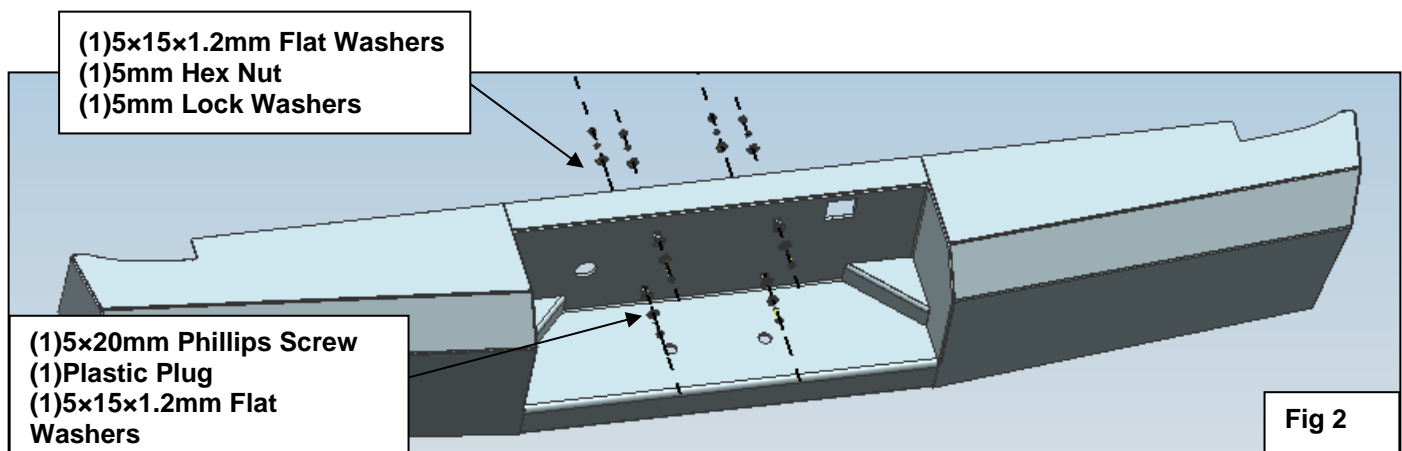
Fig 1A



Fig 1B

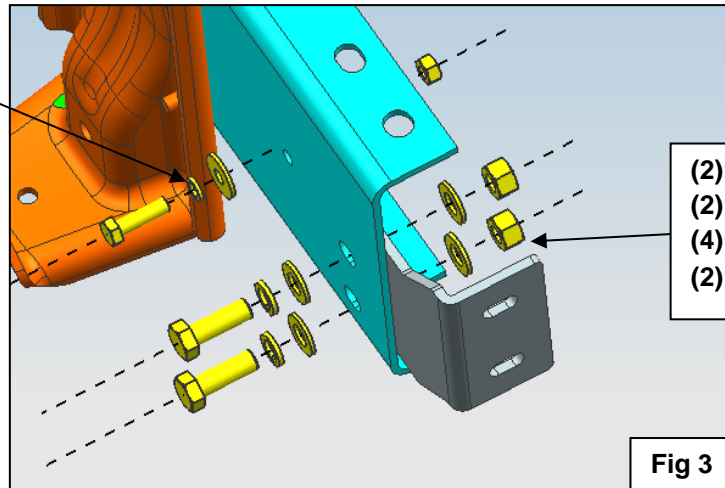
Bumper Installation

1. Attach the license plate to the Replacement Rear Bumper. Fasten the license plate with the hardware **(Fig 2)**.



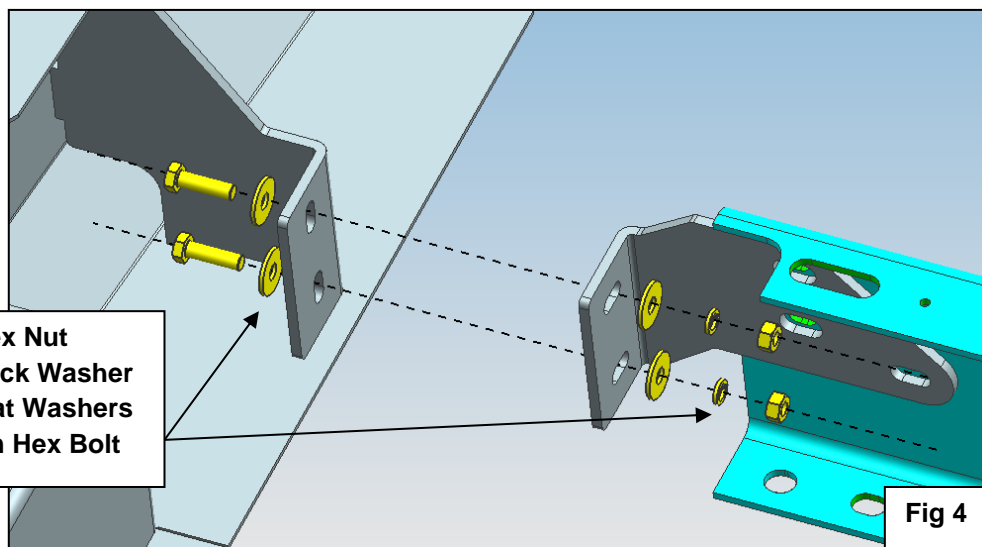
2. Attach the Mounting Bracket(left and right) to the frame (**Fig 3**). Do not fully tighten hardware at this time.

(1)10mm Hex Nut
 (1)10mm Lock Washer
 (2)10mm Flat Washers
 (1)10x35mm Hex Bolt



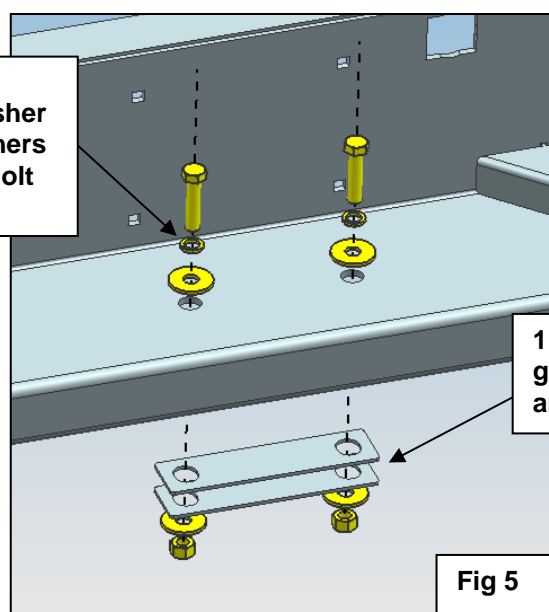
3. Install the Bumper to the Brackets (**Fig 4**). Attach each Mounting Bracket to the Bumper with the hardware. Level and adjust the bumper and fully tighten all hardware.

(2)10mm Hex Nut
 (2)10mm Lock Washer
 (4)10mm Flat Washers
 (2)10x35mm Hex Bolt

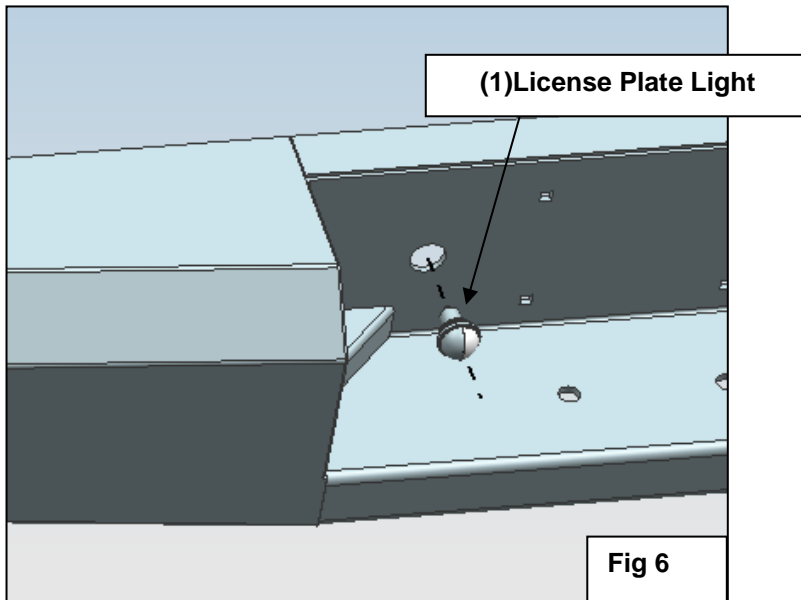


4. Attach the Bumper to the Towing Hitch (**Fig 5**). Fasten the Bumper with the hardware.

(2)12mm Hex Nut
 (2)12mm Lock Washer
 (4)12mm Flat Washers
 (2)12x50mm Hex Bolt



5. Select the license plate light and push the light into the hole in the Bumper (Fig 6).



6. Install the provided wiring harness to the license plate light.
7. Installation is finished, pick up all tools.



PRODUCT CARE

- Periodically check the product to ensure all fasteners are tight and components are intact.
- Regular waxing is recommended to protect the finish of the product.
- **Use ONLY Non-Abrasive automotive wax.** Use of any soap, polish or wax that contains an abrasive is detrimental and can scratch the finish leading to corrosion.
- Aluminum polish may be used to polish small scratches and scuffs for **Stainless Steel finish.**
- Mild soap may be used to clean the product for both **Stainless Steel and Black finish.**

FAQ's**1. Hardware's are not of correct size.**

In GMC / Chevrolet truck model 2006 & up, customer needs to reuse the factory body bolts to install the bracket. If your vehicle is not GMC / Chevrolet 2006 & up, ensure that holes are not partially covered with any plastic grommet or rust? If it is, remove the plastic grommet & rust from the thread holes & re-try the installation.

2. Mounting Bracket are not getting Installed properly.

In some cases Illustration images shown in Installation manual may not be the exactly same as per actual vehicle images ,also if Driver / Passenger side mounting brackets are very identical in the design, suggest referring Parts Identification guide to avoid fitment issue.

3. Products are thumping / rattling after installation.

Ensure that all required mounting brackets / hardware's are installed & tighten correctly. Suggest using white lithium / regular grease between the metal to metal contact surfaces.

4. Side Bar is not aligning with vehicle / Step Pads are not aligning with vehicle doors.

Side bar may be interchanged or mounting brackets are not installed at the correct position in the vehicle. Refer Parts identification guide.

5. Missing / Excess Hardware.

Recheck hardware count as per the part list.

6. Product not installing properly.

Ensure make model year, cab length and bed size of your vehicle is listed in the application. All installation steps are followed correctly.

Check out these other FX-Products!!

www.TrailFX.com



SIDE BAR



HEADACHE RACKS



RUNNING BOARDS



ROCKER GUARDS

Keystone Automotive Operations Inc. (KAO) warrants this product to be free of defects in material and workmanship at the time of purchase by the original retail consumer. KAO disclaims any other warranties, express or implied, including the warranty of fitness for a particular purpose or an intended use. If the product is found to be defective, KAO may replace or repair the product at our option, when the product is returned prepaid, with proof of purchase. Alteration to, improper installation, or misuse of this product voids the warranty. KAO's liability is limited to repair or replacement of products found to be defective, and specifically excludes liability for any incidental or consequential loss or damage.