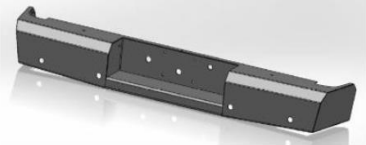




Replacement Rear Bumper

Part No. FX1013



Fits: **2015 - Current**
2015 - Current

Chevrolet Silverado 2500/3500 HD
GMC Sierra 2500/3500 HD



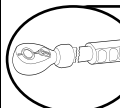
ASSISTANCE IS RECOMMENDED.



REMOVE CONTENTS FROM BOX. VERIFY ALL PARTS ARE PRESENT.



READ INSTRUCTIONS CAREFULLY BEFORE STARTING INSTALLATION.



DO NOT OVER TORQUE. STANDARD OPERATING LOAD FOR TIGHTEN BODY MOUNT NUTS & BOLTS VARIES FROM **45** TO **65** FOOT POUND.



60-180 min



Cutting Not Required



Drilling Required



support@trailfx.com



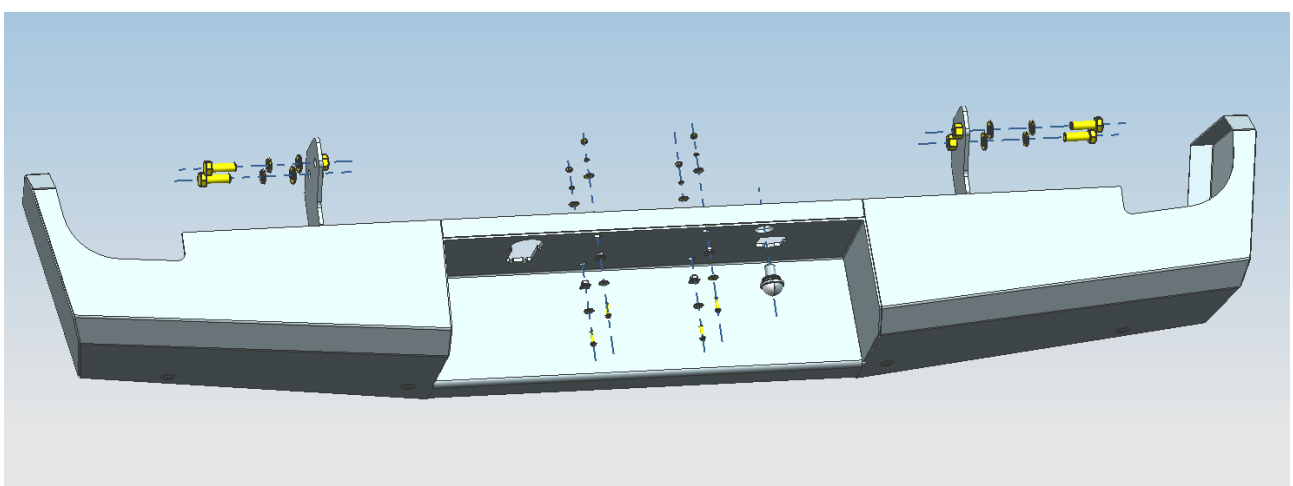
1 866 638 4870



POLISHED STAINLESS STEEL – LIMITED LIFETIME
POWDER COATED BLACK – 3 YEARS

PARTS LIST:

Qty	Part Description	Qty	Part Description
1	Replacement Rear Bumper	1	License Plate Light
4	5x20mm Phillips Screw	4	Plastic Plugs
8	5mmx15x1.2mm Flat Washers	4	5mm Hex Nuts
4	5mm Lock Washers	4	14x40mm Hex Bolts
4	14mm Lock Washers	4	14x28x2.5mm Flat Washers
8	4x10mm Button Head Allen Bolts	1	Allen Wrench
4	Rubber Sensor Plugs	4	Centering Foam Washers
4	Foam Washers	4	Retaining Rings
2	License Plate Light Wiring		



INSTALLATION PROCEDURE

BUMPER IS HEAVY, ASSISTANCE IS HIGHLY RECOMMENDED TO AVOID POSSIBLE INJURY OR DAMAGE TO THE VEHICLE.

Vehicle Preparation

1. Remove license plate, and OEM license plate lights. Disconnect trailer receptacle. If equipped, unplug back-up sensor harness.
2. Remove the two bolts attaching the stock bumper to the factory trailer hitch using a 13mm wrench. **(Fig 1)**



Fig 1

3. Remove the six bolts (three per side) attaching the stock bumper to the chassis using a 21mm wrench. Remove the remaining two bolts (circle in red) with a 15mm wrench **(Fig 2 & Fig 3)**.

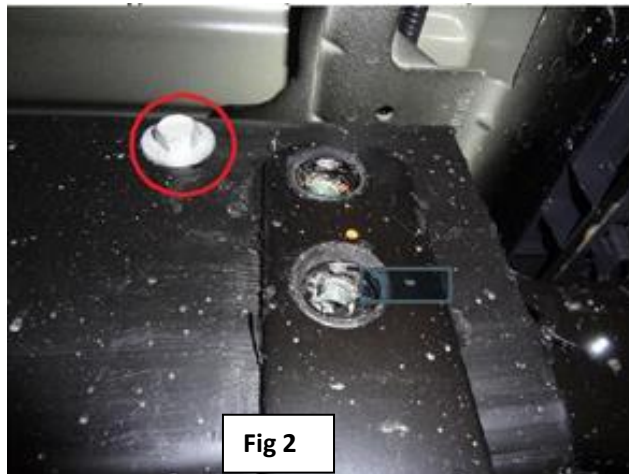


Fig 2

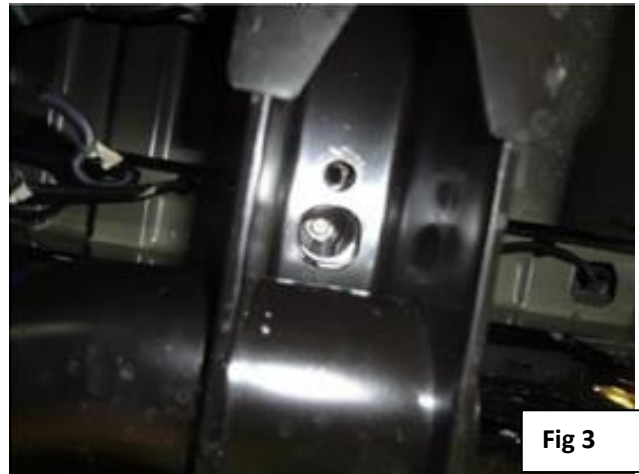
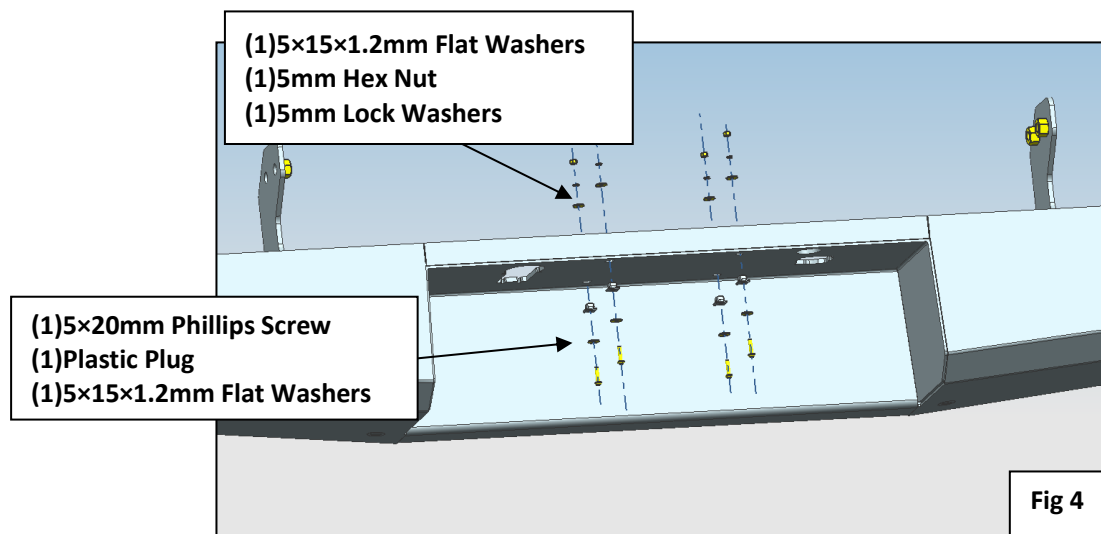


Fig 3

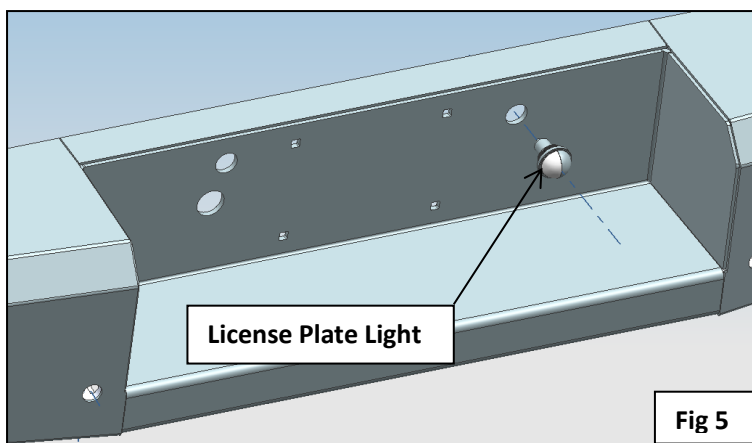
4. Loosen the bolts attaching the bed to the truck using an 18mm wrench.
5. Remove the OEM sensors from their housings (4 in total).
6. Remove OEM bumper by lifting the bed from the truck and pulling the bumper rearward away from the truck.
7. Remove OEM Spare Tire Access Cover and Trailer Plug from the OEM bumper. Set aside for reinstallation.
8. Your truck is now ready for the installation of your new Replacement Rear Bumper.

Bumper Installation

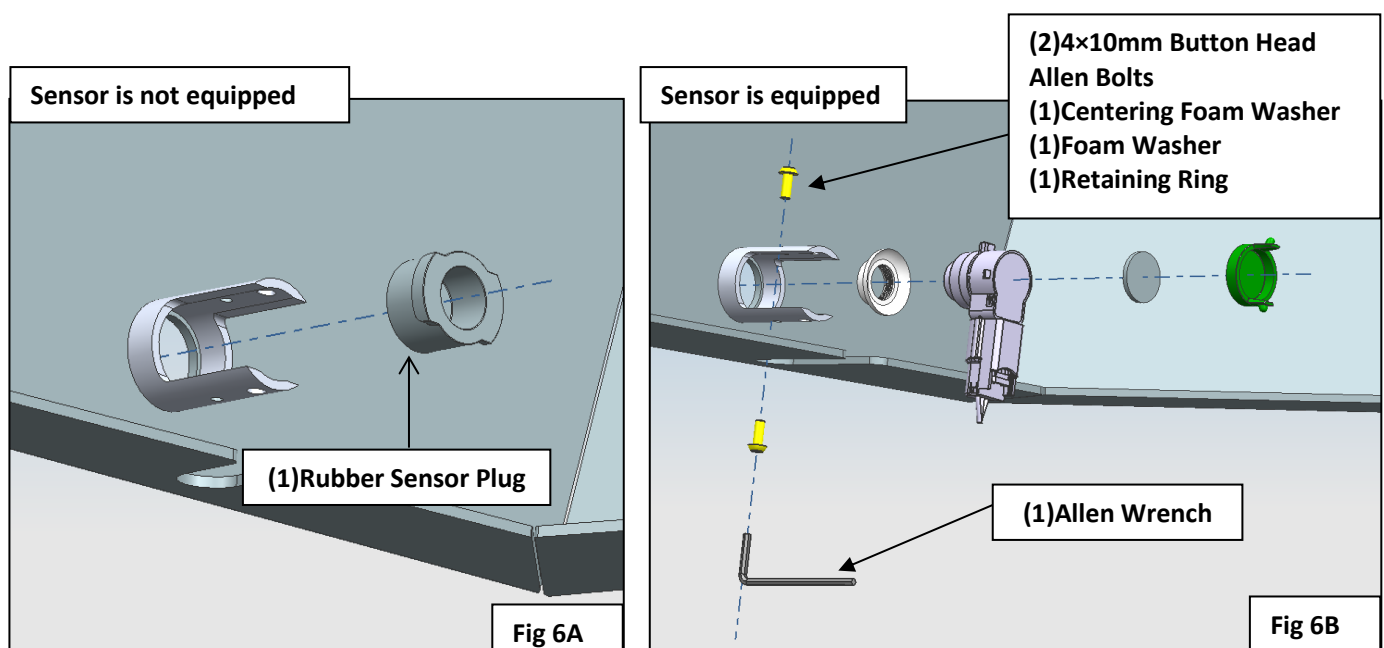
1. Attach the license plate to the Replacement Rear Bumper (**Fig 4**). Fasten the license plate with the hardware.



2. Select the license plate light and push the light into the hole in the Bumper (**Fig 5**).



3. Install the Sensor Sleeves into sensor holes. If the sensor is not equipped, install provided plugs into the sleeves (**Fig 6A**). If the sensor is equipped, insert sensors from the back side, fasten each sensor with the hardware (**Fig 6B**).



4. Drill The OEM Trailer Hitch Plug using a #16 Dill Bit (.177") in the locations pointed out with arrows below. Use care to drill directly in the center of the circles in the plastic (**Fig 7**).

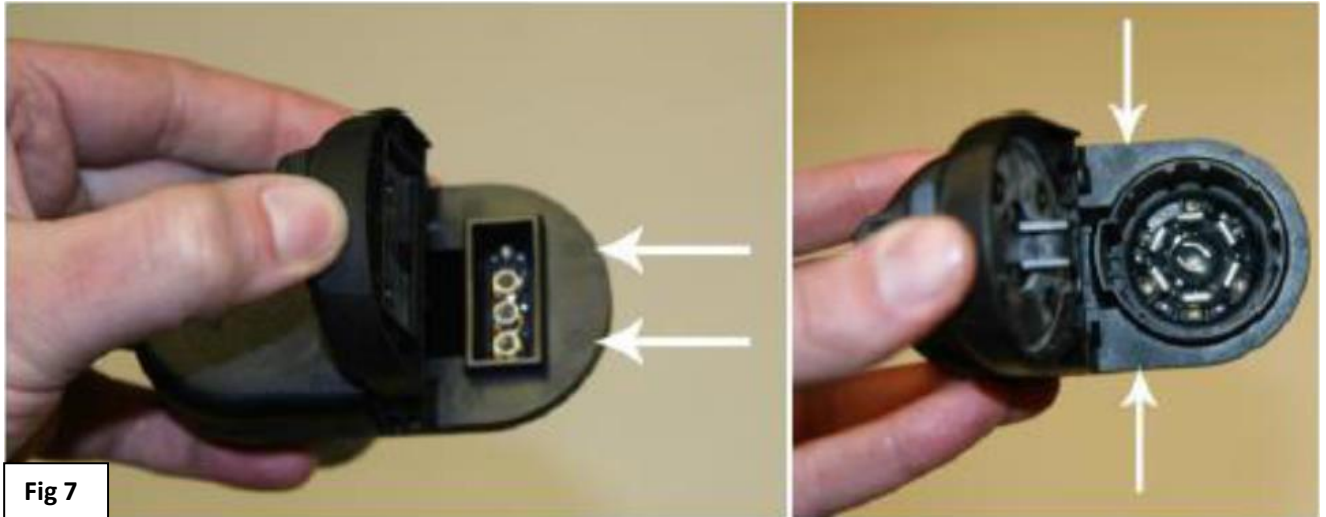


Fig 7

5. Install the Bumper to the frame (**Fig 8**). Fasten the Bumper with the hardware.

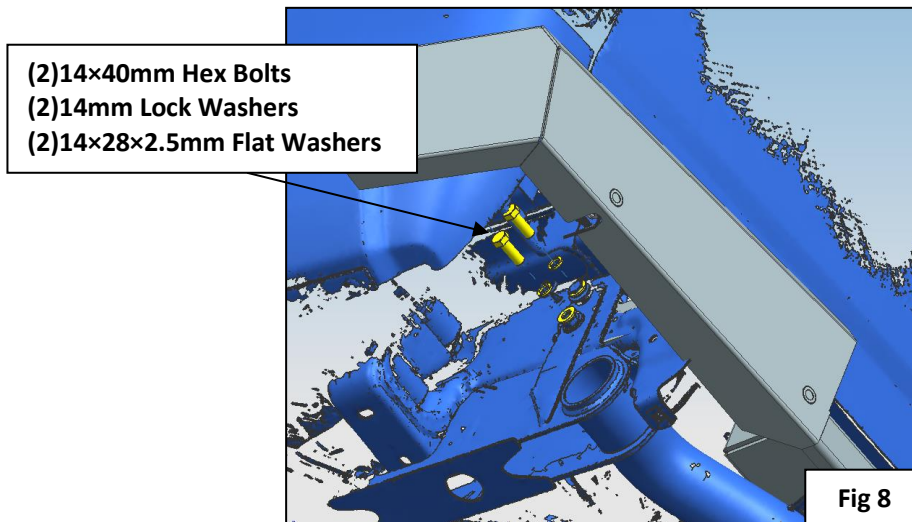


Fig 8

6. Install the provided wiring harness to the license plate light, and reinstall the wiring harness to the sensors.
7. Level and adjust the bumper, make sure that all hardware is secure and tight.
8. Installation is finished, pick up all tools.

PRODUCT CARE

- Periodically check the product to ensure all fasteners are tight and components are intact.
- Regular waxing is recommended to protect the finish of the product.
- **Use ONLY Non-Abrasive automotive wax.** Use of any soap, polish or wax that contains an abrasive is detrimental and can scratch the finish leading to corrosion.
- Aluminum polish may be used to polish small scratches and scuffs for **Stainless Steel finish.**
- Mild soap may be used to clean the product for both **Stainless Steel and Black finish.**

FAQ's**1. Hardware's are not of correct size.**

In GMC / Chevrolet truck model 2006 & up, customer needs to reuse the factory body bolts to install the bracket. If your vehicle is not GMC / Chevrolet 2006 & up, ensure that holes are not partially covered with any plastic grommet or rust? If it is, remove the plastic grommet & rust from the thread holes & re-try the installation.

2. Mounting Bracket are not getting Installed properly.

In some cases Illustration images shown in Installation manual may not be the exactly same as per actual vehicle images ,also if Driver / Passenger side mounting brackets are very identical in the design, suggest referring Parts Identification guide to avoid fitment issue.

3. Products are thumping / rattling after installation.

Ensure that all required mounting brackets / hardware's are installed & tighten correctly. Suggest using white lithium / regular grease between the metal to metal contact surfaces.

4. Side Bar is not aligning with vehicle / Step Pads are not aligning with vehicle doors.

Side bar may be interchanged or mounting brackets are not installed at the correct position in the vehicle. Refer Parts identification guide.

5. Missing / Excess Hardware.

Recheck hardware count as per the part list.

6. Product not installing properly.

Ensure make model year, cab length and bed size of your vehicle is listed in the application. All installation steps are followed correctly.

Check out these other TrailFX Products!!

www.TrailFX.com



SIDE BAR



HEADACHE RACKS



RUNNING BOARDS



ROCKER GUARDS

Keystone Automotive Operations Inc. (KAO) warrants this product to be free of defects in material and workmanship at the time of purchase by the original retail consumer. KAO disclaims any other warranties, express or implied, including the warranty of fitness for a particular purpose or an intended use. If the product is found to be defective, KAO may replace or repair the product at our option, when the product is returned prepaid, with proof of purchase. Alteration to, improper installation, or misuse of this product voids the warranty. KAO's liability is limited to repair or replacement of products found to be defective, and specifically excludes liability for any incidental or consequential loss or damage.