



Replacement Accessories

Part No. G9018MK

Fits: **All Years**

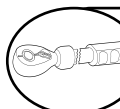
Universal Led Light Mounting Kit



REMOVE CONTENTS FROM BOX. VERIFY ALL PARTS ARE PRESENT.



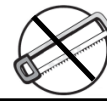
READ INSTRUCTIONS CAREFULLY BEFORE STARTING INSTALLATION.



DO NOT OVER TORQUE. STANDARD OPERATING LOAD FOR TIGHTEN BODY MOUNT NUTS & BOLTS VARIES FROM 45 TO 65 FOOT POUND.



60-180 min



Cutting Not Required



Drilling Not Required



support@trailfx.com



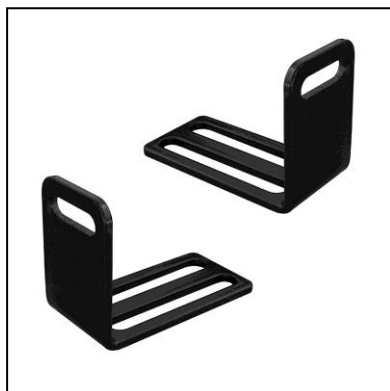
1 866 638 4870



POLISHED STAINLESS STEEL – LIMITED LIFETIME
POWDER COATED BLACK – 3 YEARS

PARTS LIST:

Qty	Part Description	Qty	Part Description
2	Universal LED "L" Mounting Brackets	2	10-1.5mm Nylon Lock Nuts
2	10-1.5mm x 25mm Hex Bolts	2	6mm x 22mm OD x 2.2mm Flat Washers
4	10mm x 24mm OD x 2.2mm Flat Washers	2	8mm x 22mm OD x 2mm Flat Washers
		2	10mm x 24mm OD x 2.2mm Flat Washers



INSTALLATION PROCEDURE

LED BRACKETS ARE DESIGNED TO ALLOW INSTALLATION OF MOST POPULAR LED "BAR STYLE" LIGHTS WITH HOUSING DIMENSIONS OF 8" TO 24" ONLY.

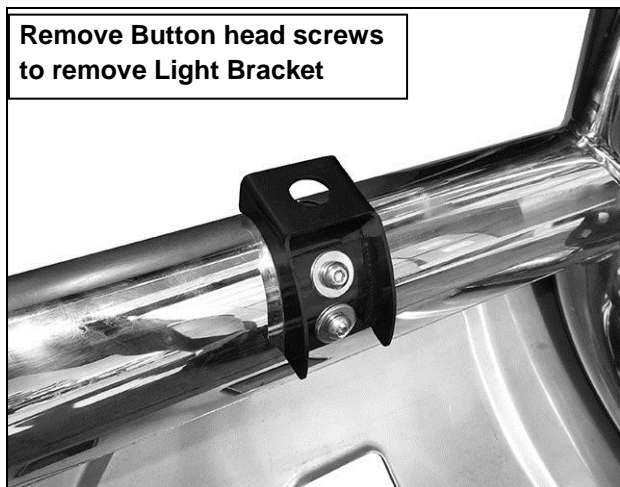
IMPORTANT: Sizes of LED lights and traditional round, square or rectangular lights can vary greatly. Verify all dimensions before purchasing or installing aftermarket lights.

- Starting at the driver side of the 3-1/2" Bull Bar, remove the Light Bracket from the Bull Bar if installed, **(Figure 1)**.
- Select (1) LED "L" Bracket. Note the (2) slots in the bottom leg of the "L" Bracket to allow for front to back adjustment. Bolt the "L" Bracket to the top of the Light Bracket with (1) 10mm Hex Bolt, (2) 10mm Flat Washers and (1) 10mm Nylon Lock Nut, **(Figure 2)**. Do not tighten 10mm hardware at this time.
- Repeat **Steps 1 & 2** to attach the second "L" Bracket to the remaining Light Bracket. Reuse the (4) Button Head Screws, (4) Lock Washers and (4) Flat Washers to attach the Bracket assemblies to the Bull Bar. **NOTE:** Light Brackets and hardware are supplied with the 3-1/2" Bull Bar hardware kit only.
- Select the best procedure for your particular installation and size of LED light:
 - LED lights with an overall width, (light housing only), of 10" (256mm) — 16" (408mm) will install with the "L" Brackets facing "in" and may have room remaining for traditional round or rectangular lights to the outside if desired, **(Figure 3)**.

IMPORTANT: If installing additional lights to the outside of the LED light bar, use the bolt/stud on the bottom of the light to attach the "L" Bracket to the Bull Bar Light Bracket, (**Figure 4**).

- b) LED lights with an overall width, (light housing only), of 18.9" (481mm) — 24.9" (633mm) will install brackets facing "out" with no room for additional lights, (**Figure 3**).
- 5) Remove the factory brackets bolted to the ends of the LED light, (light not included). Slide the "L" Brackets out of the way of the LED light. Reuse the hardware from the light to attach the LED light to the (2) "L" Brackets. **NOTE:** Depending on the LED light manufacturer and hardware used, larger flat washers may be required to cover the slot in the "L" Bracket and have been included. Select the appropriate 6mm, 8mm or 10mm Flat Washers from the "L" Bracket hardware package.
- 6) Check for clearance between the LED light housing and the front bumper. If necessary, remove the LED light and "L" Brackets. Move the (2) 10mm Hex Bolts from the forward slots in the brackets to the rear slots to move the LED light forward slightly if desired, (**Figure 2**). Once all adjustments have been made and the light properly adjusted, tighten all hardware. Follow the light manufacturer's installation instructions for proper electrical wiring to the vehicle.
- 7) Do periodic inspections to the installation to make sure that all hardware is secure and tight.

Examples of typical LED "L" Bracket installation



Remove Button head screws to remove Light Bracket

(Fig 1) 3-1/2" Bull Bar Light Bracket pictured (not included with the "L" Bracket kit)

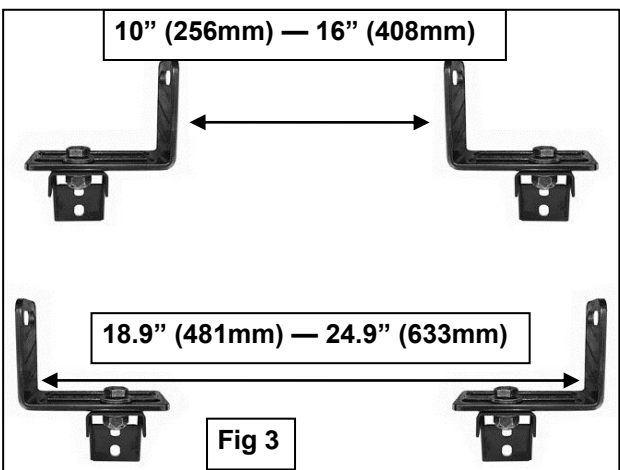
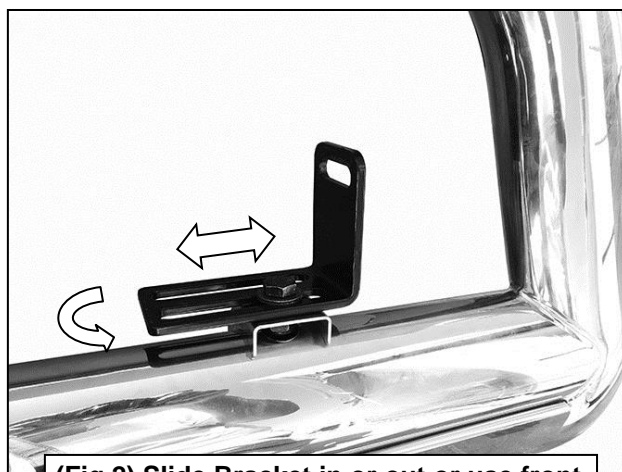


Fig 3



(Fig 2) Slide Bracket in or out or use front or rear slot as necessary for proper fit



Complete Installation (light not included)

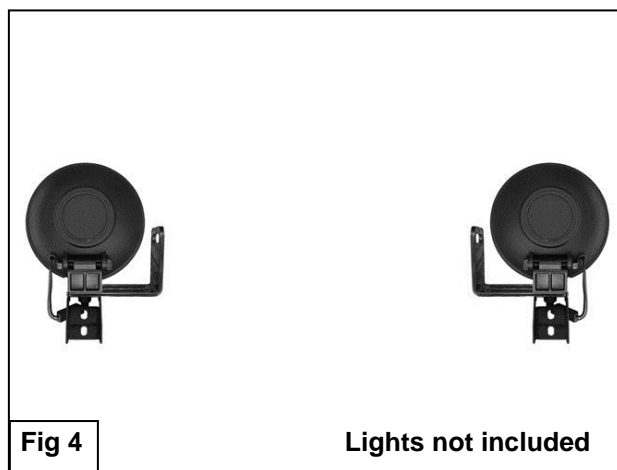


Fig 4

Lights not included

PRODUCT CARE

- Periodically check the product to ensure all fasteners are tight and components are intact.
- Regular waxing is recommended to protect the finish of the product.
- **Use ONLY Non-Abrasive automotive wax.** Use of any soap, polish or wax that contains an abrasive is detrimental and can scratch the finish leading to corrosion.
- Aluminum polish may be used to polish small scratches and scuffs for **Stainless Steel finish.**
- Mild soap may be used to clean the product for both **Stainless Steel and Black finish.**

FAQ's**1. Hardware's are not of correct size.**

In GMC / Chevrolet truck model 2006 & up, customer needs to reuse the factory body bolts to install the bracket. If your vehicle is not GMC / Chevrolet 2006 & up, ensure that holes are not partially covered with any plastic grommet or rust? If it is, remove the plastic grommet & rust from the thread holes & re-try the installation.

2. Mounting Bracket are not getting Installed properly.

In some cases Illustration images shown in Installation manual may not be the exactly same as per actual vehicle images ,also if Driver / Passenger side mounting brackets are very identical in the design, suggest referring Parts Identification guide to avoid fitment issue.

3. Products are thumping / rattling after installation.

Ensure that all required mounting brackets / hardware's are installed & tighten correctly. Suggest using white lithium / regular grease between the metal to metal contact surfaces.

4. Side Bar is not aligning with vehicle / Step Pads are not aligning with vehicle doors.

Side bar may be interchanged or mounting brackets are not installed at the correct position in the vehicle. Refer Parts identification guide.

5. Missing / Excess Hardware.

Recheck hardware count as per the part list.

6. Product not installing properly.

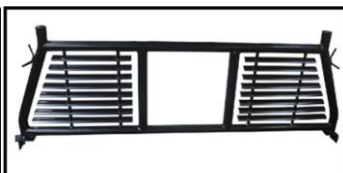
Ensure make model year, cab length and bed size of your vehicle is listed in the application. All installation steps are followed correctly.

Check out these other TrailFX Products!!

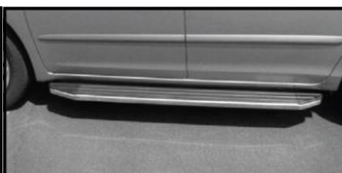
www.TrailFX.com



SIDE BAR



HEADACHE RACKS



RUNNING BOARDS



ROCKER GUARDS

Keystone Automotive Operations Inc. (KAO) warrants this product to be free of defects in material and workmanship at the time of purchase by the original retail consumer. KAO disclaims any other warranties, express or implied, including the warranty of fitness for a particular purpose or an intended use. If the product is found to be defective, KAO may replace or repair the product at our option, when the product is returned prepaid, with proof of purchase. Alteration to, improper installation, or misuse of this product voids the warranty. KAO's liability is limited to repair or replacement of products found to be defective, and specifically excludes liability for any incidental or consequential loss or damage.