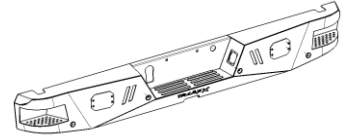




Rear LD Bumper

Part No. RLDB003TI



Fits: **2009- Current**

Dodge Ram 1500



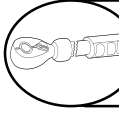
ASSISTANCE IS RECOMMENDED.



REMOVE CONTENTS FROM BOX. VERIFY ALL PARTS ARE PRESENT.



READ INSTRUCTIONS CAREFULLY BEFORE STARTING INSTALLATION.



DO NOT OVER TORQUE. STANDARD OPERATING LOAD FOR TIGHTEN BODY MOUNT NUTS & BOLTS VARIES FROM 45 TO 65 FOOT POUND.



60-180 min



Cutting Not Required



Drilling Not Required



support@trailfx.com



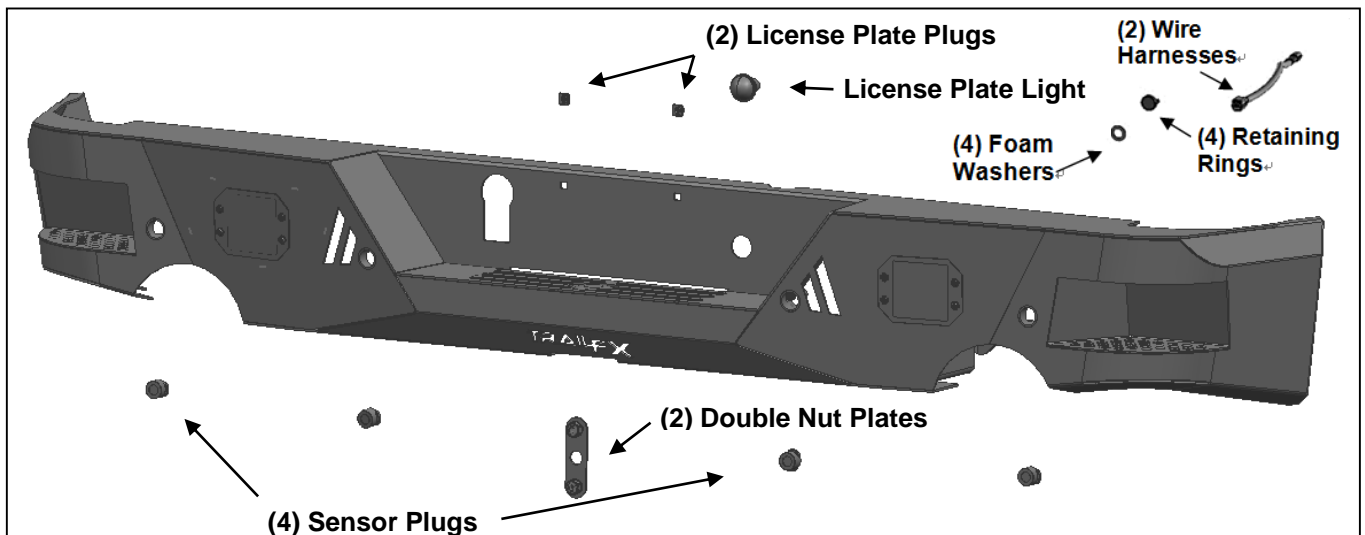
1 866 638 4870



WARRANTY
POLISHED STAINLESS STEEL - LIMITED LIFETIME
POWDER COATED BLACK - 3 YEARS

PARTS LIST:

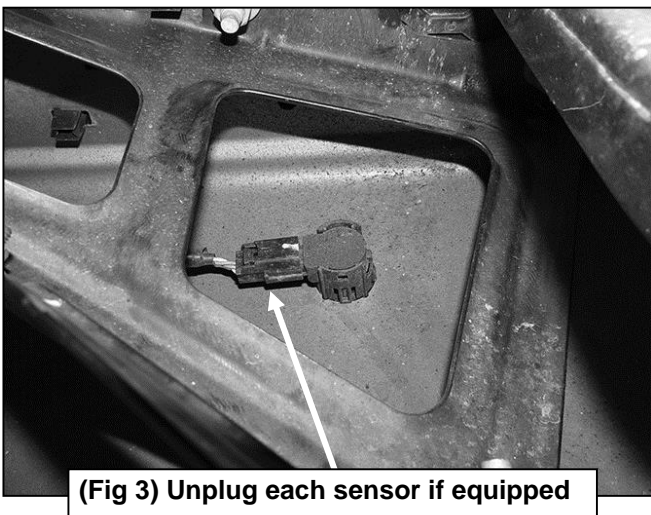
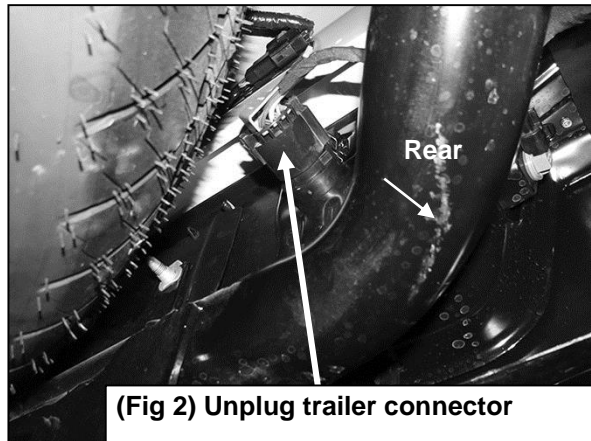
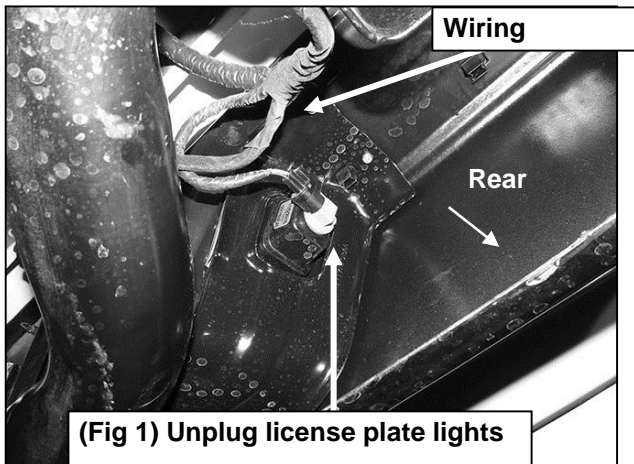
Qty	Part Description	Qty	Part Description
1	LD1 Rear Bumper Assembly	1	6mm Wrench
1	Push in License Plate Light	8	4mm x 10mm Button Head Bolts
2	Plastic Plugs for license plate mount	1	4mm Wrench
4	Sensor Hole Plugs	10	Nylon Cable Ties 200mm
1	Step Hole Plug	4	Retaining Rings
2	12mm Double Nut Plates	4	15.5mm x 25mm x 2mm Foam Washers
4	12-1.75mm x 40mm Hex Bolts	2	Dodge Wiring Harnesses
4	12mm x 37mm x 3mm Flat Washers	1	Sensor Cover Kit
4	12mm Lock Washers		



INSTALLATION PROCEDURE:

BUMPER IS HEAVY, ASSISTANCE IS HIGHLY RECOMMENDED TO AVOID POSSIBLE INJURY OR DAMAGE TO THE VEHICLE. ON MODELS WITH DUAL EXHAUST, ALLOW EXHAUST TO COMPLETELY COOL BEFORE STARTING INSTALLATION.

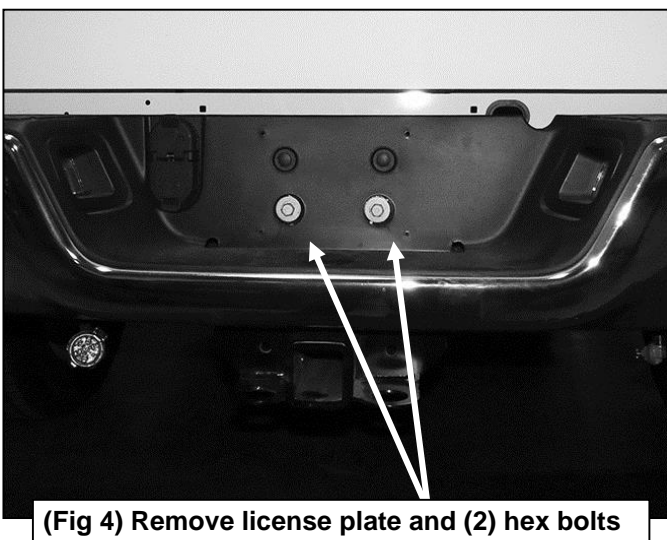
1. Start installation by unplugging the license plate lights, towing harness plug and sensors if equipped, (**Figures 1—3**). Move the wiring harness away from the bumper. Remove the license plate.



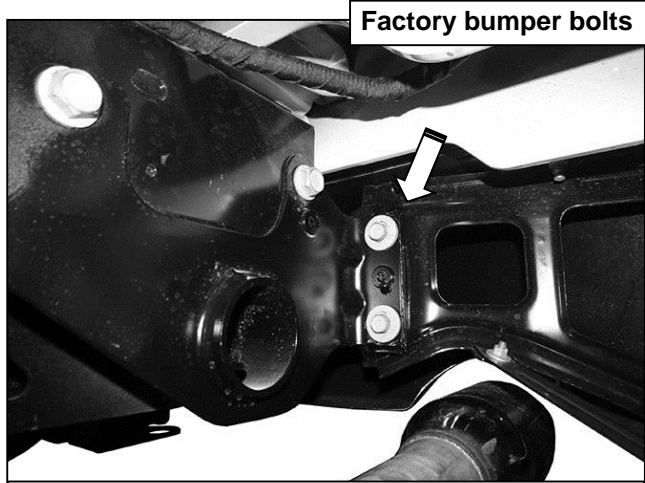
WARNING! Do not remove bumper bolts unless the bumper is properly supported on blocks or stands or the bumper may fall.

Models with dual exhaust, allow exhaust to completely cool before starting installation

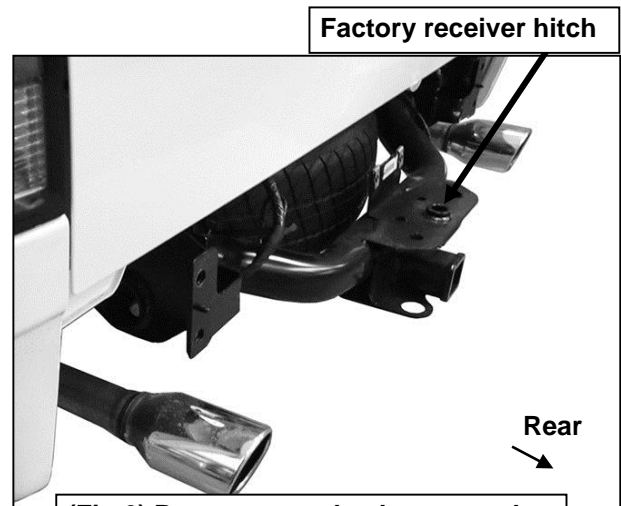
2. Place blocks or jack stands under the bumper to support it during bumper bolt removal. Once the bumper has been safely supported, remove the (2) hex bolts behind the license plate, (**Figure 4**). Next, remove the (4) factory bumper bolts, (2 per side), and slide the rear bumper off of the end of the frame, (**Figures 5 & 6**). **WARNING!** Assistance is required to hold the bumper in place during hardware removal and to prevent the bumper from falling. Move the bumper to a clean stable work surface.



WARNING! Do not crawl under bumper unless the bumper is properly supported on blocks or stands or the bumper may fall.

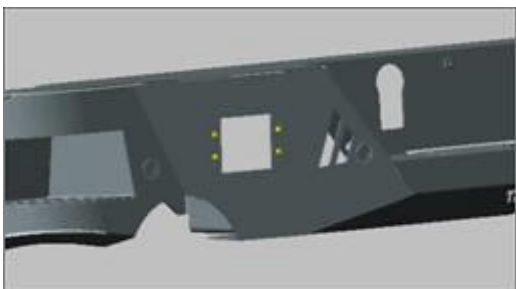
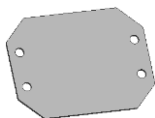


(Fig 5) Example of factory bumper bracket with (2) hex bolts pictured from behind bumper



(Fig 6) Bumper completely removed

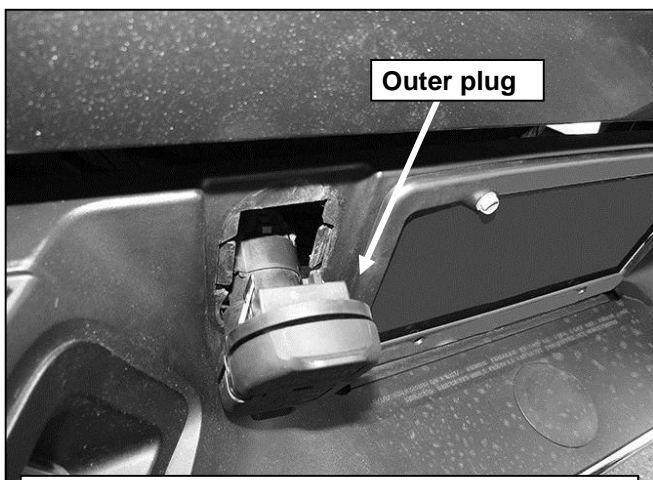
3. If installing lights at this time, check for clearance around light. Remove back screens from light housings for additional clearance around lights as required, (Figure 7). **IMPORTANT:** On models with Dual Exhaust, screens must be removed before installing the Bumper if lights are to be installed.



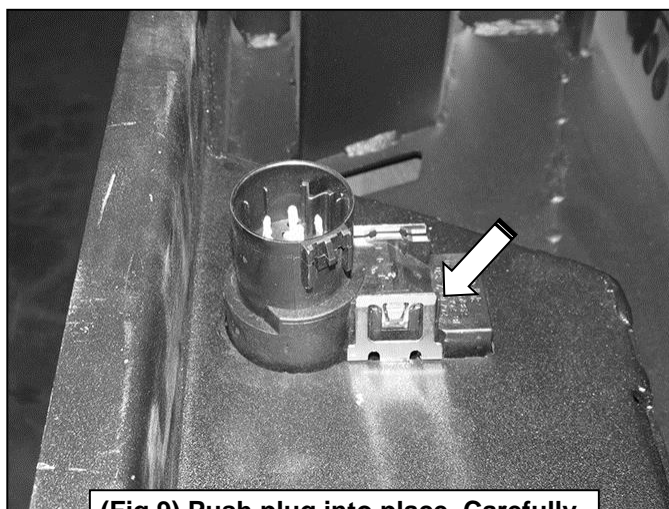
(Fig 7) Remove plate if necessary for additional clearance around or access to lights

IMPORTANT: On models with dual exhaust, if bumper installation will include accessory lights, check for clearance around lights before installing bumper. Screens cannot be removed once bumper is installed.

4. Remove the outer towing harness plug from the bumper, (Figure 8). Snap the plug into the opening in the LD1 Bumper, (Figure 9). If necessary, use a flat blade screwdriver to carefully pry the lock tab on the clip out to help lock plug in place.

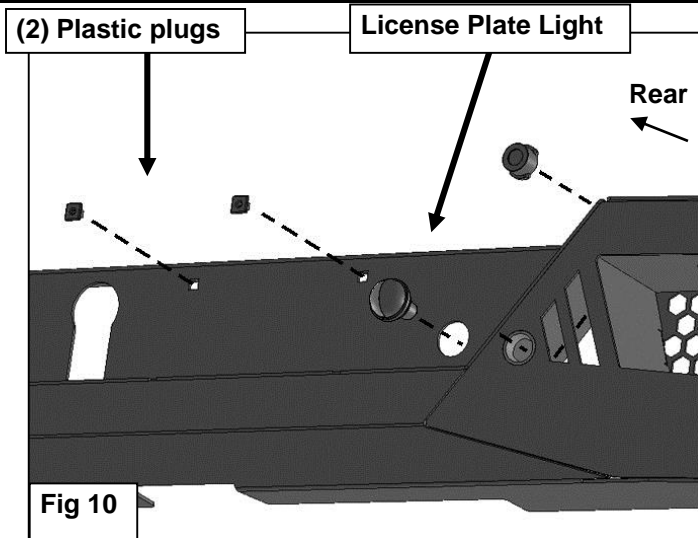


(Fig 8) Remove outer trailer plug from bumper



(Fig 9) Push plug into place. Carefully bend locking tab outward if necessary

5. Insert the included (2) push-in plugs to attach the license plate to the Bumper, (Figure 10). Insert the included License Plate Light into the mounting hole in the bumper, (Figure 10).



6. Sensors must be installed in Bumper, (if equipped), before installing Bumper Assembly.

Models without bumper sensors:

- a. Select the included (4) Rubber Plugs.
- b. From behind bumper, push plugs into sensor mounting holes.

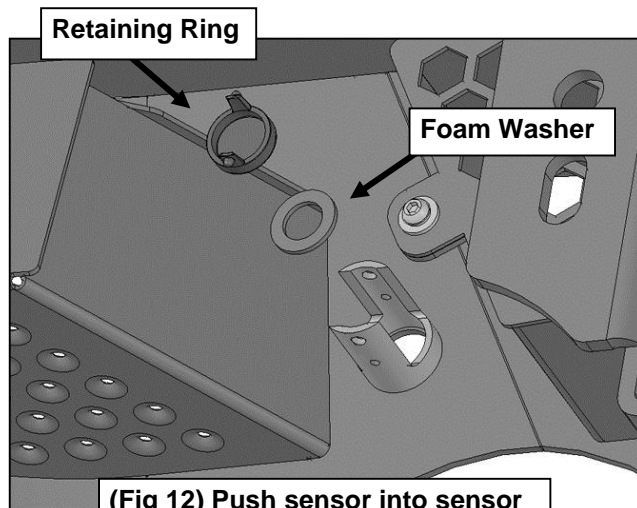
Models with bumper mounted sensors:

- a. Remove factory sealing washer from sensor, (**Figure 11**). Attach Foam Washer onto the front of the sensor.



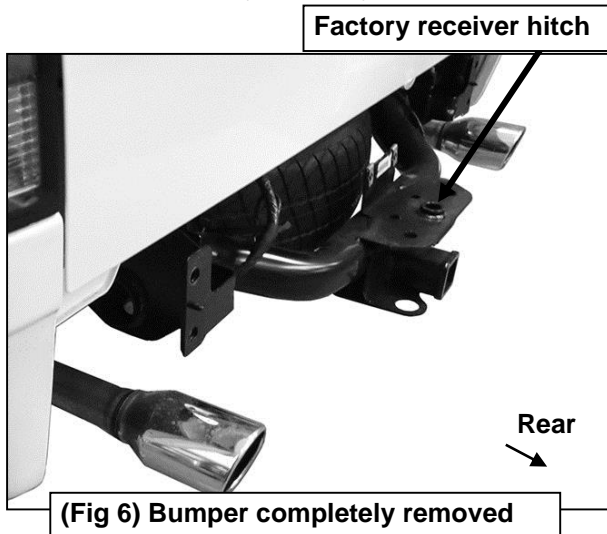
(Fig 11) Remove the sleeve (right) from each sensor

- b. Push the sensor in from the back of the Bumper until it is flush with the sensor sleeve. **NOTE:** Sensor tabs may need to be trimmed to fit sensor inside the sensor sleeve. Push (1) Retaining Ring into the sensor sleeve to secure the sensor in place, (**Figure 12**).



(Fig 12) Push sensor into sensor sleeve on the back of the Bumper

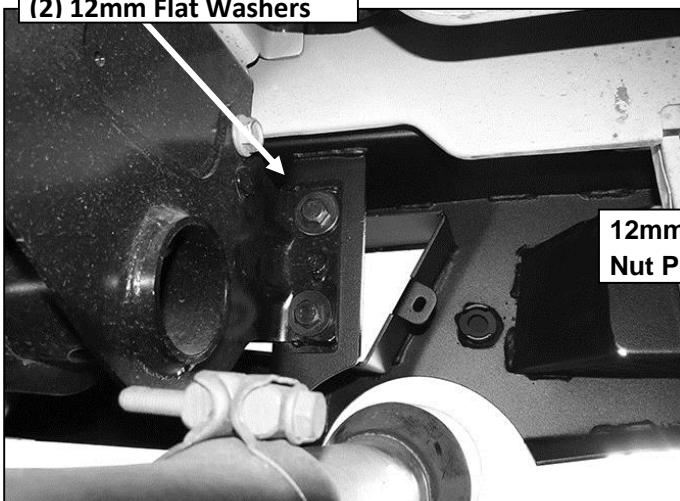
- c. Repeat the previous steps for the remaining sensors.
 - d. Starting on the driver side, run the OE sensor wire harness through the bumper cutouts. Connect the first two driver side sensors to the OE sensor wire harness.
 - e. Use the provided wire harness extensions to connect the remaining two passenger side sensors to the OE sensor wire harness.
7. With assistance, position the LD1 Bumper up to the bumper brackets on the ends of the frame, **(Figure 6)**. Temporarily support the weight of the Bumper Assembly. **WARNING:** To avoid possible injury or damage to the vehicle, do not proceed until the Bumper is fully and safely supported.



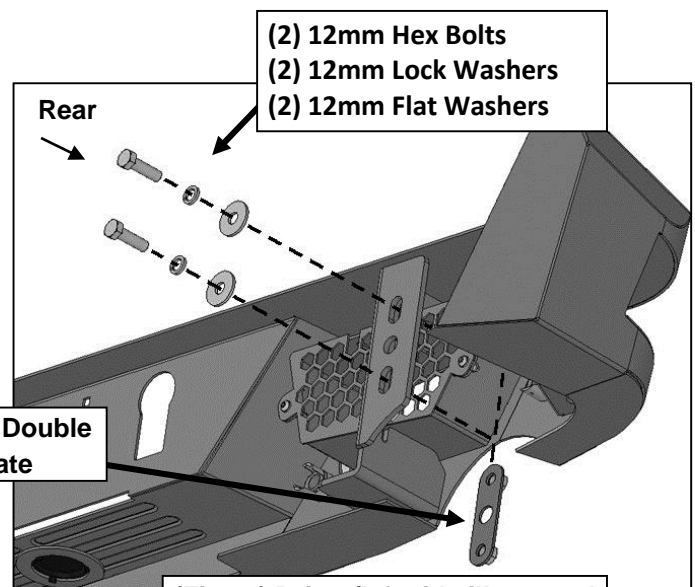
8. Line up the (2) mounting holes in the back of the driver side of the bumper with the brackets on the end of the frame. Slide (2) 12mm Double Nut Plates behind the mounting plates on the Bumper, **(Figure 13)**. Attach the Bumper to the frame and Nut Plates with (4) 12mm Hex Bolts, (4) 12mm Lock Washers and (4) 12mm Flat Washers, **(Figures 13 & 14)**. Leave hardware loose at this time.

WARNING! Do not crawl under bumper unless the bumper is properly supported on blocks or stands or the bumper may fall.

(2) 12mm Hex Bolts
(2) 12mm Lock Washers
(2) 12mm Flat Washers



(Fig 14) Driver/left side pictured from behind bumper



(Fig 13) Driver/left side illustrated

9. Slowly open the tail gate and check for clearance. Level and adjust Bumper and tighten all hardware.
10. Connect the license plate light harness to the License Plate Light. Reattach the wiring harness to the back of the trailer plug and back up sensors (if equipped). Use the included Wire Ties to secure the wiring harness to the bumper and frame. Seal off any open wire connections.
11. Do periodic inspections to the installation to make sure that all hardware is secure and tight.

PRODUCT CARE

- Periodically check the product to ensure all fasteners are tight and components are intact.
- Regular waxing is recommended to protect the finish of the product.
- **Use ONLY Non-Abrasive automotive wax.** Use of any soap, polish or wax that contains an abrasive is detrimental and can scratch the finish leading to corrosion.
- Aluminum polish may be used to polish small scratches and scuffs for **Stainless Steel finish.**
- Mild soap may be used to clean the product for both **Stainless Steel and Black finish.**

FAQ's**1. Hardware's are not of correct size.**

In GMC / Chevrolet truck model 2006 & up, customer needs to reuse the factory body bolts to install the bracket. If your vehicle is not GMC / Chevrolet 2006 & up, ensure that holes are not partially covered with any plastic grommet or rust? If it is, remove the plastic grommet & rust from the thread holes & re-try the installation.

2. Mounting Bracket are not getting Installed properly.

In some cases Illustration images shown in Installation manual may not be the exactly same as per actual vehicle images ,also if Driver / Passenger side mounting brackets are very identical in the design, suggest referring Parts Identification guide to avoid fitment issue.

3. Products are thumping / rattling after installation.

Ensure that all required mounting brackets / hardware's are installed & tighten correctly. Suggest using white lithium / regular grease between the metal to metal contact surfaces.

4. Side Bar is not aligning with vehicle / Step Pads are not aligning with vehicle doors.

Side bar may be interchanged or mounting brackets are not installed at the correct position in the vehicle. Refer Parts identification guide.

5. Missing / Excess Hardware.

Recheck hardware count as per the part list.

6. Product not installing properly.

Ensure make model year, cab length and bed size of your vehicle is listed in the application. All installation steps are followed correctly.

Check out these other TrailFX Products!!

www.TrailFX.com



SIDE BAR



HEADACHE RACKS



RUNNING BOARDS



ROCKER GUARDS

Keystone Automotive Operations Inc. (KAO) warrants this product to be free of defects in material and workmanship at the time of purchase by the original retail consumer. KAO disclaims any other warranties, express or implied, including the warranty of fitness for a particular purpose or an intended use. If the product is found to be defective, KAO may replace or repair the product at our option, when the product is returned prepaid, with proof of purchase. Alteration to, improper installation, or misuse of this product voids the warranty. KAO's liability is limited to repair or replacement of products found to be defective, and specifically excludes liability for any incidental or consequential loss or damage.