



Replacement Skid Plate

Part No. G9006S/G9007S/G9008B/

G9009S/G9010B/G9010S/G9011S/G9012S

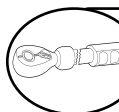
Fits: 3" Bull Bar



REMOVE CONTENTS FROM BOX. VERIFY ALL PARTS ARE PRESENT.



READ INSTRUCTIONS CAREFULLY BEFORE STARTING INSTALLATION.



DO NOT OVER TORQUE. STANDARD OPERATING LOAD FOR TIGHTEN BODY MOUNT NUTS & BOLTS VARIES FROM 45 TO 65 FOOT POUND.



10-15 min



Cutting Not Required



Drilling Not Required



support@trailfx.com



1 866 638 4870



POLISHED STAINLESS STEEL – LIMITED LIFETIME
POWDER COATED BLACK – 3 YEARS

PARTS LIST:

Qty	Part Description	Qty	Part Description
1	Skid Plate	3	6mm Lock Washer
5	6mm x 20mm Button Head Allen Bolt	2	6mm Nylock Hex Nut
7	6mm x 12mm OD x 1.6mm Flat Washers	3	Nut Insert

Noted: The following install images are just for reference. The actual products may have different style.

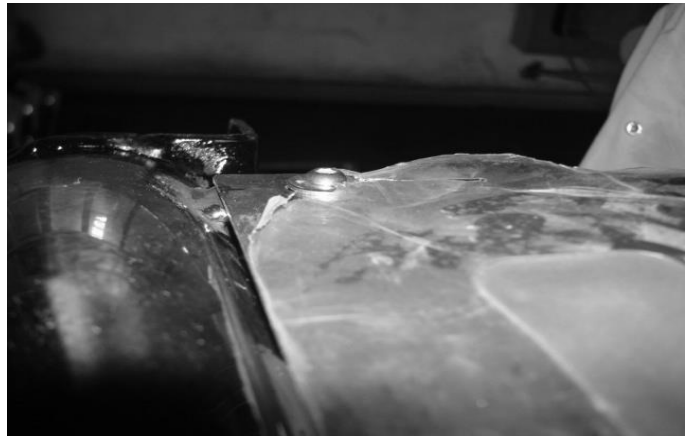
Important: The replacement Skid Plate would be easy to become a little deformed when transferring, you may need to Slightly press or bend it to make the holes align when installing.

INSTALLATION PROCEDURE

1. Tear the gummed paper on the Skid plate to let the mounting hole can be installed, but do not tear off the whole gummed paper before finishing the installation. Otherwise, the Skid Plate may be scratched easily.



2. Attach the Skid Plate to the holes on the Bull Bar with (2) 6mm Button Head Allen Bolt, (2) 6mm Lock Washers, (4) 6mm Flat Washers and (2) 6mm Nylock Hex Nut. Snug but do not tighten hardware.



3. Insert (3) 6mm Button Head Allen Bolt and (3) 6mm flat washer to the three holes on the cross bar which with the nut inserts and tighten the hardware.



4. Level and adjust the Skid Plate and tighten the hardware. Pay attention to your strength when screwing the bolts, the Skid plate will be easily to become deformed if hardware is tightened too much.



PRODUCT CARE

- Periodically check the product to ensure all fasteners are tight and components are intact.
- Regular waxing is recommended to protect the finish of the product.
- **Use ONLY Non-Abrasive automotive wax.** Use of any soap, polish or wax that contains an abrasive is detrimental and can scratch the finish leading to corrosion.
- Aluminum polish may be used to polish small scratches and scuffs for **Stainless Steel finish.**
- Mild soap may be used to clean the product for both **Stainless Steel and Black finish.**

FAQ's**1. Hardware's are not of correct size.**

In GMC / Chevrolet truck model 2006 & up, customer needs to reuse the factory body bolts to install the bracket. If your vehicle is not GMC / Chevrolet 2006 & up, ensure that holes are not partially covered with any plastic grommet or rust? If it is, remove the plastic grommet & rust from the thread holes & re-try the installation.

2. Mounting Bracket are not getting Installed properly.

In some cases Illustration images shown in Installation manual may not be the exactly same as per actual vehicle images ,also if Driver / Passenger side mounting brackets are very identical in the design, suggest referring Parts Identification guide to avoid fitment issue.

3. Products are thumping / rattling after installation.

Ensure that all required mounting brackets / hardware's are installed & tighten correctly. Suggest using white lithium / regular grease between the metal to metal contact surfaces.

4. Side Bar is not aligning with vehicle / Step Pads are not aligning with vehicle doors.

Side bar may be interchanged or mounting brackets are not installed at the correct position in the vehicle. Refer Parts identification guide.

5. Missing / Excess Hardware.

Recheck hardware count as per the part list.

6. Product not installing properly.

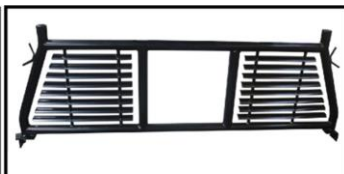
Ensure make model year, cab length and bed size of your vehicle is listed in the application. All installation steps are followed correctly.

Check out these other TrailFX Products!!

www.TrailFX.com



SIDE BAR



HEADACHE RACKS



HD GRILLE GUARDS



ROCKER GUARDS

Keystone Automotive Operations Inc. (KAO) warrants this product to be free of defects in material and workmanship at the time of purchase by the original retail consumer. KAO disclaims any other warranties, express or implied, including the warranty of fitness for a particular purpose or an intended use. If the product is found to be defective, KAO may replace or repair the product at our option, when the product is returned prepaid, with proof of purchase. Alteration to, improper installation, or misuse of this product voids the warranty. KAO's liability is limited to repair or replacement of products found to be defective, and specifically excludes liability for any incidental or consequential loss or damage.