



# Fender Flare

## PFFT3001T / PFFT3001S



**2007-2013: Toyota Tundra**



TO AVOID BEING SCRATCHED, PLEASE PROTECT THE SURFACE OF THE FENDER FLARE CAREFULLY.



REMOVE CONTENTS FROM BOX. VERIFY ALL PARTS ARE PRESENT.



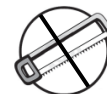
READ INSTRUCTIONS CAREFULLY BEFORE STARTING INSTALLATION.



PLEASE USE SAFETY GLASSES & ENSURE TO BLOCK VEHICLE MOVEMENT DURING INSTALLATION PROCESS



60-180 min



Cutting Not Required



Drilling Not Required



[support@trailfx.com](mailto:support@trailfx.com)



1 866 638 4870



Limited Lifetime Warranty

**IMPORTANT: DO NOT OVER-TIGHTEN THE MOUNTING SCREWS.**

**OVER-TIGHTENING THE SCREWS WILL RESULT IN STRESS FRACTURES.**

### KIT INCLUDES

Qty	Part Description	Qty	Part Description
2 ea.	Front Fender Flares (1 Driver 1 Passenger) (A)	1 ea.	Rubber Edge Trim (26ft.) (E)
2 ea.	Rear Fender Flares (1 Driver 1 Passenger) (B)	33 ea.	Button head stainless steel bolts (F)
6 ea.	Speed clips (C)	33 ea.	Nylon Jam Nut (G)
6 ea.	Phillips head screws (D)	6 ea.	Long speed clips (H)
		6 ea.	Hex head screw M6x.3 20mm (I)

### TOOLS NEEDED

2mm Phillips head screw driver	13mm socket with extension
Roll of masking tape	Ratchet
4.5mm Hex key	

A 2



B 2



C 6



D 6



E 26 ft.



F 33



G 33



H 6



I 6

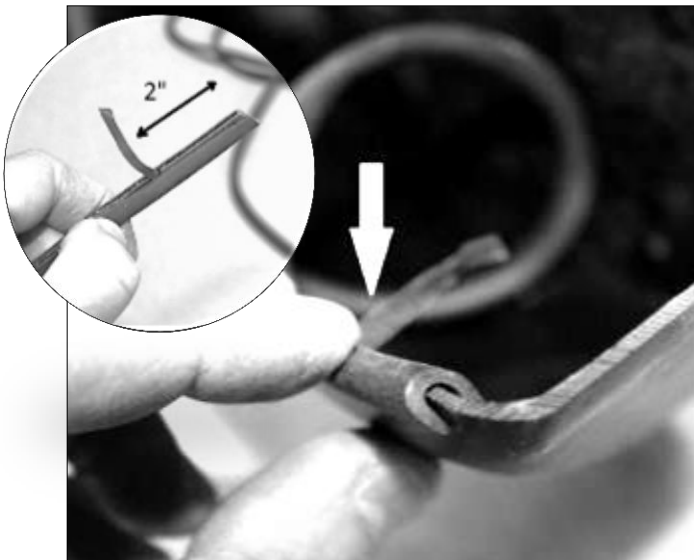


## NOTES ON INSTALLATION

- Please read and understand all instructions prior to beginning the installation process.
- Pre-fit all panels as you proceed with the installation before attempting to bolt into position.
- This will enable you to understand exactly how the part is intended to fit onto vehicle.  
Do NOT over-tighten screw.
- If the instructions call for you to save and re-install parts set them aside in a protected area so as not to damage them.
- Ensure you have the correct TrailFX fender flares for your vehicle before beginning the installation process.  
NOTE: The flares are embossed with either a D or P indicating Passenger or Driver. Make sure you match the correct flare to the side of the vehicle you are installing.
- If you plan on painting your fender flares it must be done prior to installation. All surfaces must be cleaned and prepped following the specifications outlined by the paint manufacturer.
- PLEASE NOTE: Painted flares cannot be returned.

### INSTALLING RUBBER TRIM ON NEW FENDER FLARES

Install the rubber edge trim on the outer edge of the fender flare. The outer edge is the side that comes into contact with the vehicle's fender. It DOES NOT get installed on the inner edge of the fender flare.



#### Step 1

Locate the supplied rubber edge trim (E). Peel back approx. 2" of the red lining. Starting at one end of the flare, push the trim onto the edge of the flare.

**NOTE: Make sure the red liner sits inside the flare.**



#### Step 2

Continue pressing the rubber trim onto the flare in 6" increments.

**Step 3**

Peel back 6 inches of the red liner.

**Step 4**

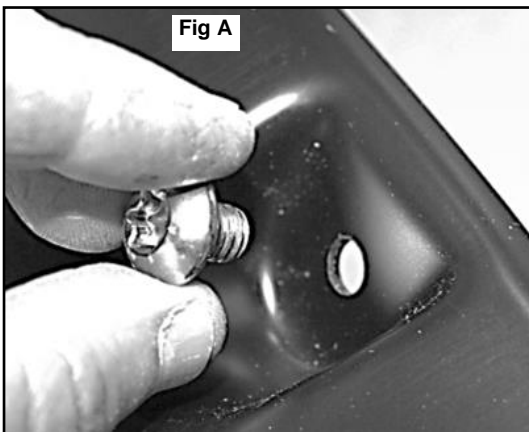
Firmly press the trim to bond to the flare. Repeat steps 1-4 until you reach the other end of the flare. Repeat this process for the remaining flares.

**STEP 2****INSTALLTION OF BUTTON HEAD STAINLESS STEEL BOLTS**

Locate the supplied Button head stainless steel bolts and nylon jam nuts. Install one Button head stainless steel bolts in one of the holes in the recess of the flares as shown below in the two images. Fig A and B

Proceed to the inside of the flare. Place a nylon jam nut on the threads of the Button head stainless steel bolts and tighten. Use a 13mm socket with an extension and a 4.5mm Hex key as shown in fig C and D to complete the task.

**NOTE: These bolts are decorative only and are not intended for securing the flares.**



## REMOVING FACTORY FRONT MUD GUARD



### Step 1 Front mud guard.

Using a 10mm socket locate and remove 4 factory bolts holding the factory mud guards onto the vehicle. Save factory screws for reinstallation.

Locate and remove 1 factory bolt on underside of vehicle. Fig 2 Discard bolt  
Discard mud guard.

## REMOVING FACTORY REAR MUD GUARD



### Step 1

#### Rear mud guard.

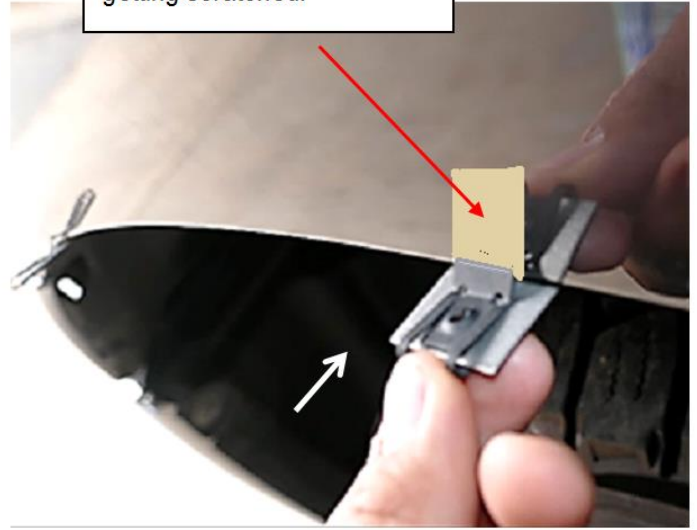
Using a 10mm socket locate and remove 5 factory bolts holding the factory mud guards onto the vehicle. Fig 1

Locate and remove 1 factory bolt on underside of vehicle. Fig 2 Save all factory hardware for reinstallation. Discard mud guard.

## INSTALLING FRONT FENDER FLARES



Note: Stick a small piece of masking tape on the vehicle before installing speed clip to protect vehicle paint from getting scratched.



### Step 1

Install a supplied screw through the slot on a supplied L bracket (H) onto all three locations shown above. Tighten down factory screws with 10mm socket.

### Step 2

Place supplied speed clips (J) over all three L bracket as shown. Line up speed clip holes to L bracket holes. **IMPORTANT!** Place speed clips with the bent edge facing up as shown above.



### Step 3

Place front flare (A) onto vehicle.

### Step 4

Using a #2 Philips head screw driver install supplied Phillip's head screws through fender flare and into bracket and speed clips. Repeat same step for remaining brackets.

## INSTALLING FRONT FENDER FLARES continued



### Step 5

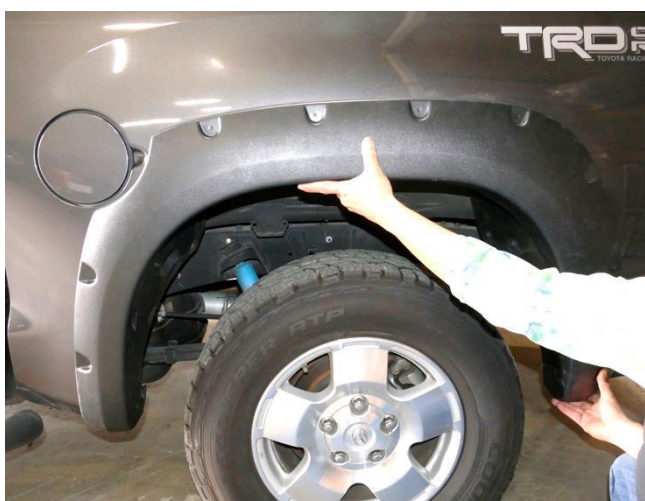
Install factory hex head screws removed in step 1 page 2 onto all three position shown above. Tighten down using 10mm socket. Repeat step 1-5 to complete installation for the other side of vehicle.

## INSTALLING REAR FENDER FLARES

**NOTE:** Rear flares must be oriented correctly. Look behind the flare to find a D or P embossed on the flare. Be sure to install the one marked with a D on the driver side of the vehicle and the one marked P on the passenger side of the vehicle.

## INSTALLING REAR FENDER FLARES

**NOTE:** Rear flares must be oriented correctly. Look behind the flare to find a D or P embossed on the flare. Be sure to install the one marked with a D on the driver side of the vehicle and the one marked P on the passenger side of the vehicle.



### Step 1

Place rear fender flare (B) onto vehicle.



### Step 2

Reinstall factory screws onto all 6 positions shown above tighten down using 10mm socket. Repeat step 1-2 to complete installation other side of the vehicle.

**PRODUCT CARE**

1. Periodically check the product to ensure all fasteners are tight and components are intact.
2. Regular waxing is recommended to protect the finish of the product.

**FAQ's**

1. **Fender flares are loose after installation.**  
*Please ensure that all required mounting brackets / hardware's are installed & tighten correctly.*
2. **Missing / Excess Hardware.**  
*Re-check hardware count as per the part list.*

Check out these other TrailFX Products!!

www.TrailFX.com



FULL FRONT REPLACEMENT BUMPER



REAR REPLACEMENT BUMPER



3.5 INCH OVAL BULL BAR



6" OVAL BENT STEP BAR

Keystone Automotive Operations Inc. (KAO) warrants this product to be free of defects in material and workmanship at the time of purchase by the original retail consumer. KAO disclaims any other warranties, express or implied, including the warranty of fitness for a particular purpose or an intended use. If the product is found to be defective, KAO may replace or repair the product at our option, when the product is returned prepaid, with proof of purchase. Alteration to, improper installation, or misuse of this product voids the warranty. KAO's liability is limited to repair or replacement of products found to be defective, and specifically excludes liability for any incidental or consequential loss or damage.