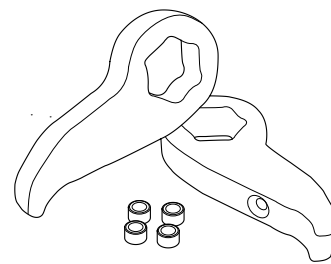




## G25LL1 & G25LL2 2.5" Front Lift Leveling Kit

**Fit: 1988-2007 GMC/ Chevrolet 1500 (Classic) 2 & 4WD Escalade/ Ext/ Esv/ Silverado/ Avalanche / Tahoe / Suburban / Sierra / Yukon / Yukon XL.**

**2000-2010 GMC Sierra/ Chevrolet Silverado 1500HD/2500-3500HD 2 & 4WD Avalanche 2500 / Tahoe 2500 /Suburban 2500/Yukon / Yukon XL / H2 2500 - 8 Lug**



REMOVE CONTENTS FROM BOX.  
VERIFY ALL PARTS ARE PRESENT.



MAX. TIRE SIZE  
33" x 11.5"



support@trailfx.com



READ INSTRUCTIONS CAREFULLY  
BEFORE STARTING INSTALLATION.



INSTALL TIME  
60-120 min



844-717-LIFT (5438)



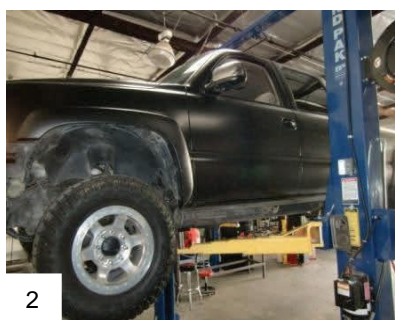
Use the proper tools and safety equipment to perform all work. Torque all fasteners to proper specifications and double check work. Align your vehicle after installation.

### PARTS LIST:

Qty	Part Description	Qty	Part Description
2	Keys	2	Shock Extender
1	68-3001 Hardware Pack		



**Note:** This tool/equivalent is required to replace torsion keys.



Raise and support vehicle on jack stands at the frame.



Locate and remove torsion bar adjusting bolts.



Disconnect lower shock hardware.



Install torsion bar loading tool and run torsion key up.

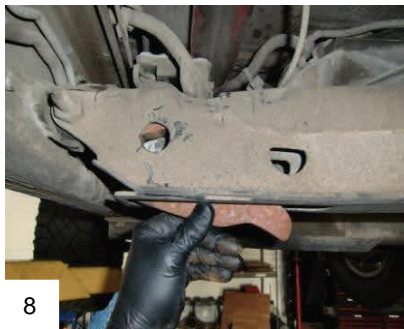


Remove torsion key adjusting block from cross-member.



7

Unload torsion key and tool. Then slide torsion bar forward.



8

Note key locking position. Torsion key can now be removed.



9

Install new forged torsion key in same position.



10

Reinstall tool and adjust upward enough to insert adj. block.



11

Install new adj. bolt and make bolt flush with cross-member.



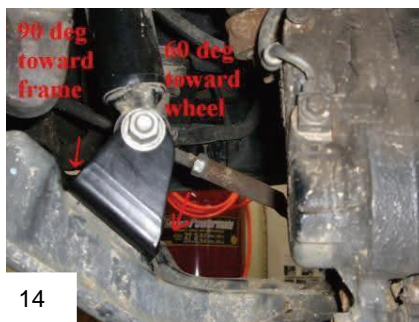
12

**G25LL1** Install front lower shock extensions and hardware.



13

**G25LL2** shock extensions will replace the OE brackets.



14

Install new extension bracket with OE bolts as shown.

- **Reinstall wheels/tires and torque.**
- **Recheck all work performed and test drive vehicle.**
- **Note: Initial height can now be set.**
- **Final adjustments of the torsion bars may, and should be performed by the alignment shop.**

## ⚠️ FINAL CHECKS & ADJUSTMENTS ⚠️

### Post Installation Check:

- Once the vehicle is lowered to the ground, check all parts which have rubber or urethane components to insure proper torque.
- Torque wheels to factory specs.
- Move vehicle backwards and forwards a short distance to allow suspension components to adjust.
- Turn the front wheels completely left then right and verify adequate tire, wheel, brake line, and ABS wire clearance.
- Test and inspect steering, brake and suspension components for tightness and proper operation.
- Inspect brakes hoses and ABS lines for adequate slack at full extension.
- Test drive vehicle and re-check the torque of all fasteners and re-torque wheels on vehicle.

**NOTE:** Failure to perform the post inspection checks may result in vehicle component damage and/or personal injury or death to driver and/or passengers.

### Wheel Alignment/Headlamp Adjustment:

- ✓ It is necessary to have a proper and professional wheel alignment performed by a certified alignment technician.
- ✓ Align the vehicle to factory specifications.
- ✓ It is recommended that your vehicle alignment be checked after any off-road driving.
- ✓ In addition to your vehicle alignment, for your safety and others, it is necessary to check and adjust your vehicle headlamps for proper aim and alignment.

### Vehicle Re-Torque and Safety Inspection:

Upon completion of all services and adjustments performed on your vehicle, and within 50 miles of driving, check to ensure all fasteners and hardware are properly torqued to specification as noted in the vehicles factory service manual.

### Check out these other TrailFX Products!!

www.TrailFX.com



**HOOP STEPS**



**HD GRILLE GUARDS**



**WINCHES**



**LED LIGHTS**

Keystone Automotive Operations Inc. (KAO) warrants this product to be free of defects in material and workmanship at the time of purchase by the original retail consumer. KAO disclaims any other warranties, express or implied, including the warranty of fitness for a particular purpose or an intended use. If the product is found to be defective, KAO may replace or repair the product at our option, when the product is returned prepaid, with proof of purchase. Alteration to, improper installation, or misuse of this product voids the warranty. KAO's liability is limited to repair or replacement of products found to be defective, and specifically excludes liability for any incidental or consequential loss or damage.