



TOW MIRROR GM07HEC



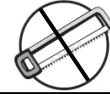
2007-2013 Chevrolet Silverado / GMC Sierra 1500
2007-2014 Chevrolet Silverado / GMC Sierra HD 2500/3500



DO NOT OVER-TIGHTEN THE MOUNTING SCREWS. OVER-TIGHTENING THE MOUNTING SCREWS MAY RESULT IN DAMAGE TO MOUNTING PLATE OR HARDWARE.



60-180 min



Cutting Not Required



Drilling Not Required



REMOVE CONTENTS FROM BOX. VERIFY ALL PARTS ARE PRESENT.



support@trailfx.com



1 866 638 4870



READ INSTRUCTIONS CAREFULLY BEFORE STARTING INSTALLATION.



Limited Lifetime Warranty

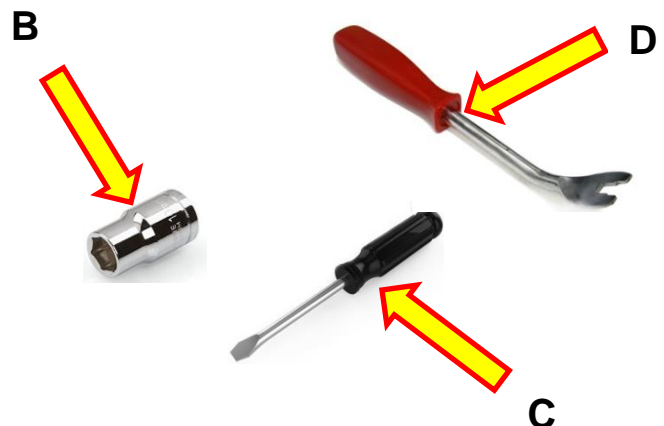
PARTS LIST

SL.No	Part Description	SL.No	Part Description
1	Drivers Side Mirror	2	Passenger Side Mirror



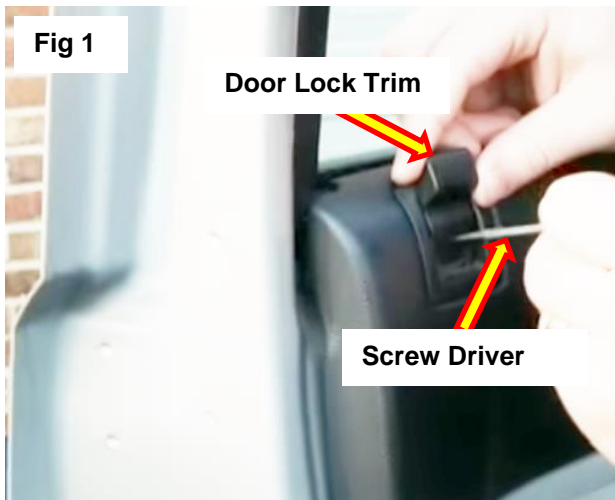
TOOLS NEEDED

Ratchet and extensions (A)	Flat head screw driver (C)
10 mm socket (B)	Trim Panel Removal Tool (D)



Installation Instructions

1. Roll down the window in order to hold the mirror during removal and installation.
2. Keep the door lock in unlock condition. Then using a flat head screw driver pop out the door lock trim. See figure 1.



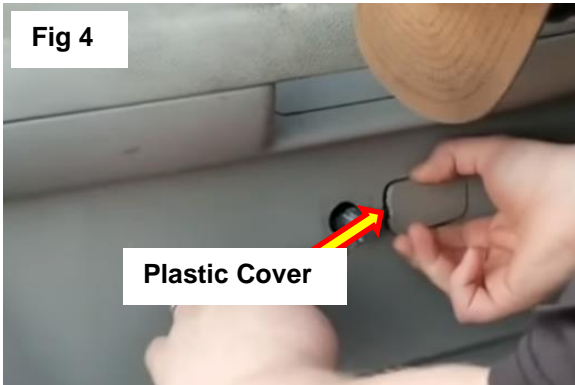
3. Using a flat head screw driver pop out the door handle trim. See figure 2.



4. Remove the door handle by pulling the pin in the door handle down using a flat head screw driver. See figure 3.



5. Remove the plastic cover near the door handle. Insert the flat head screw driver behind the plastic cover and pop it off. See figure 4.



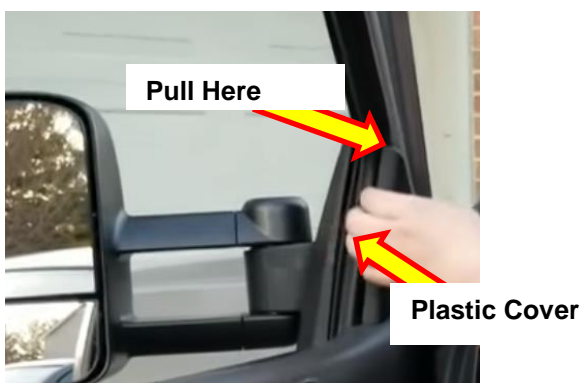
6. Remove the plastic cover inside the door handle. Insert the flat head screw driver behind the plastic cover and pop it off. See figure 5.



7. Remove the 10mm screws using 10mm socket, ratchet and extensions. Please refer below images for location of the screws.



8. Use a trim panel tool or flat edge screwdriver to pop trim panel clips out from the slots in the door.



9. Pull the door panel slowly towards you until all clips come out. See below images.



10. Remove the piece of foam by hand to reveal the three 10mm nuts which are used to hold the mirror to the door. See figure 6.



Fig 6

Piece of Foam

11. Remove the nuts and washers using a 10mm socket, ratchet and extensions. See figure 7.

12. Before removing the bolts place a piece of paper / paper cloth in the area shown in image, this is required to ensure bolts doesn't fall into the gap behind door.



Fig 7

Nuts and Washers

13. Unplug the OEM mirror electrical wire from socket of control panel of door handle. See figure 8.



14. After all nuts are removed and wire connection is unplugged, slowly remove the OEM mirror from the vehicle.

15. Slide the mirror studs of the new TrailFX tow mirror into the three holes in door.

16. Re-install the washers and nuts using a 10mm socket and ratchet. Once mirror is secure, plug in wiring connection.

17. Pass the wire of TrailFX Mirror through heat barrier sheets where all others power functions pass through.

18. Plug the electric wire of TrailFX mirror into the socket of control panel of door handle. See figure 9



19. Replace the piece of foam to its original position.

20. Re-install the plastic trim panel by inserting the plastic clips of the cover into the slot and push into place.

21. After installation, check all mirror functions to make sure they are working properly.

PRODUCT CARE

1. Periodically check the product to ensure all fasteners are tightened and components are intact.
2. Regular waxing is recommended to protect the finish of the product.
3. **Use ONLY Non-Abrasive automotive wax.** Use of any soap, polish or wax that contains an abrasive is detrimental and can scratch the finish leading to corrosion, ensure the cloth used for wiping is clean and soft.

FAQ's

1. **Tow mirrors are loose after installation.**
Please ensure that all required mounting brackets / hardware's are installed & tightened correctly.
2. **Missing / Excess Hardware.**
Re-check hardware count as per the part list.

Check out these other TrailFX Products!!

www.TrailFX.com



Keystone Automotive Operations Inc. (KAO) warrants this product to be free of defects in material and workmanship at the time of purchase by the original retail consumer. KAO disclaims any other warranties, express or implied, including the warranty of fitness for a particular purpose or an intended use. If the product is found to be defective, KAO may replace or repair the product at our option, when the product is returned prepaid, with proof of purchase. Alteration to, improper installation, or misuse of this product voids the warranty. KAO's liability is limited to repair or replacement of products found to be defective, and specifically excludes liability for any incidental or consequential loss or damage.