



TOW MIRROR GM99MT



1999-2006 Chevrolet Silverado / GMC Sierra 1500
1999-2006 Chevrolet Silverado / GMC Sierra HD 2500/3500



DO NOT OVER-TIGHTEN THE MOUNTING SCREWS.
OVER-TIGHTENING THE MOUNTING SCREWS MAY RESULT IN DAMAGE TO MOUNTING PLATE OR HARDWARE.



60-180 min



Cutting Not Required



Drilling Not Required



REMOVE CONTENTS FROM BOX. VERIFY ALL PARTS ARE PRESENT.



support@trailfx.com



1 866 638 4870



READ INSTRUCTIONS CAREFULLY BEFORE STARTING INSTALLATION.



Limited Lifetime Warranty

PARTS LIST

Qty	Part Description	Qty	Part Description
1	Drivers Side Mirror (A)	1	Passenger Side Mirror (B)

TOOLS NEEDED

Ratchet and Socket	Phillips Screwdriver
10 mm socket	Trim Panel Removal Tool
10mm Deep Well Socket	

A



B

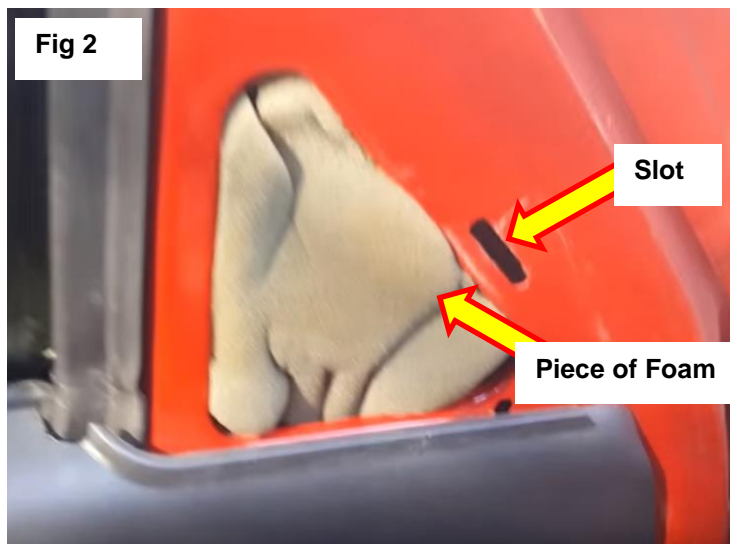


Installation Instructions

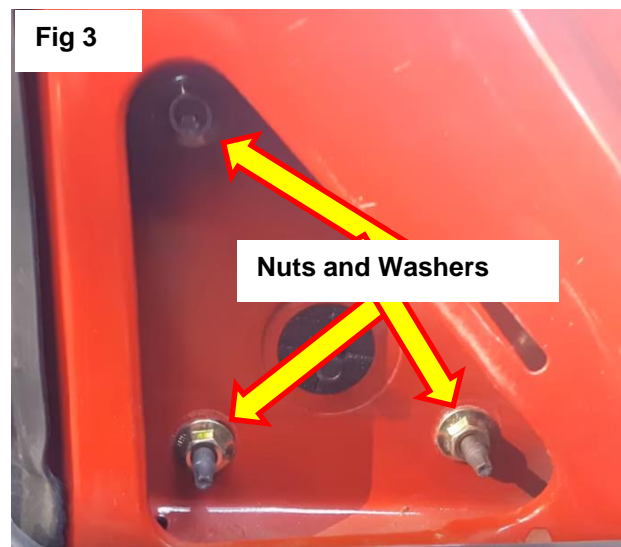
1. Roll down the window in order to hold the mirror during removal and installation.
2. Use a trim panel tool or flat edge screwdriver to pop trim panel clips out from the slots in the door.



3. Remove the Piece of foam by hand to reveal the three 10mm nuts which are used to hold the Mirror to the door. See figure 2.



4. Remove the nuts and washers using a 10mm socket and ratchet. See figure 3.



Socket and Ratchet Set

NOTE: Ensure one person holds the mirror from the outside when loosening the nuts to prevent the mirror from falling.

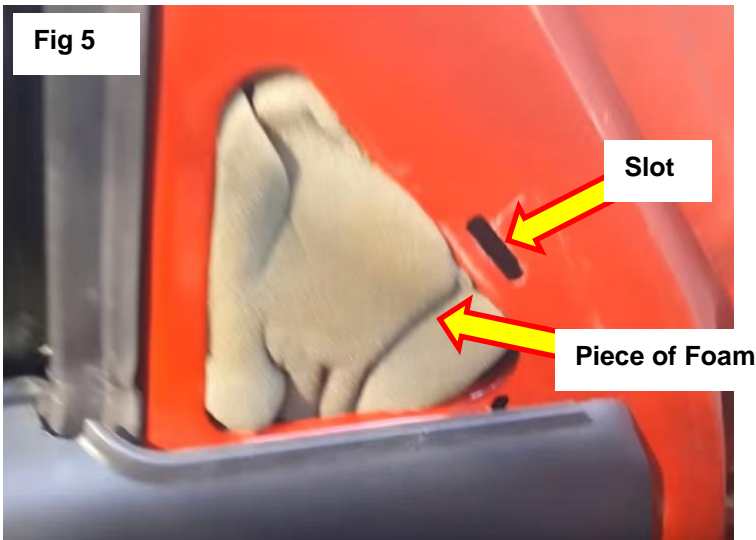
5. After all nuts are removed, slowly remove OEM mirror from vehicle.
6. Clean the New TrailFX Mirror using microfiber cloth; ensure no dust / dirt on thread of bolts/nuts
7. Slide the mirror studs of the new TrailFX tow mirror into the hold in door. See figure 4.

Fig 4

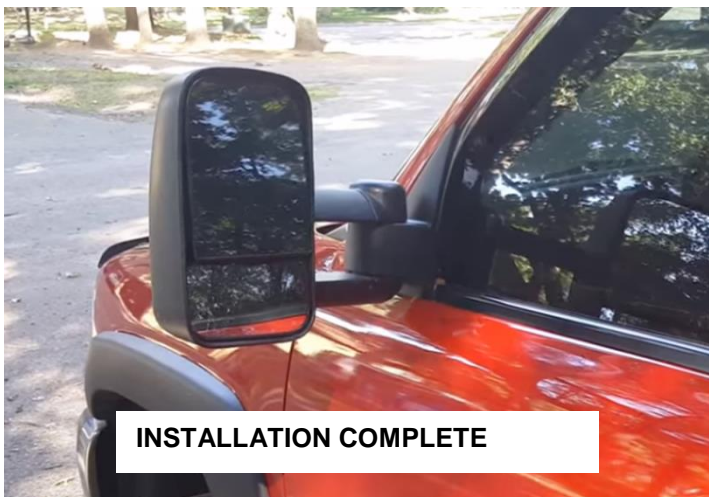


8. Re-install the washers and nuts using a 10mm socket and ratchet. Once mirror is secure, plug in wiring connection.
9. Replace the piece of foam to its original position as below figure 5.

Fig 5



10. Re-install the plastic trim panel by inserting the plastic clips of the cover into the slot and push into place.
11. After installation, check all mirror functions to make sure they are working properly.



PRODUCT CARE

1. Periodically check the product to ensure all fasteners are tightened and components are intact.
2. Regular waxing is recommended to protect the finish of the product.
3. **Use ONLY Non-Abrasive automotive wax.** Use of any soap, polish or wax that contains an abrasive is detrimental and can scratch the finish leading to corrosion, ensure the cloth used for wiping is clean and soft.

FAQ's

1. **Tow mirrors are loose after installation.**
Please ensure that all required mounting brackets / hardware's are installed & tightened correctly.
2. **Missing / Excess Hardware.**
Re-check hardware count as per the part list.

Check out these other TrailFX Products!!

www.TrailFX.com



FULL FRONT REPLACEMENT BUMPER

REAR REPLACEMENT BUMPER

3.5 INCH OVAL BULL BAR

6" OVAL BENT STEP BAR

Keystone Automotive Operations Inc. (KAO) warrants this product to be free of defects in material and workmanship at the time of purchase by the original retail consumer. KAO disclaims any other warranties, express or implied, including the warranty of fitness for a particular purpose or an intended use. If the product is found to be defective, KAO may replace or repair the product at our option, when the product is returned prepaid, with proof of purchase. Alteration to, improper installation, or misuse of this product voids the warranty. KAO's liability is limited to repair or replacement of products found to be defective, and specifically excludes liability for any incidental or consequential loss or damage.