



TOW MIRROR RAM13HET



2013-2018

Dodge Ram 1500
Dodge Ram 2500/3500



DO NOT OVER-TIGHTEN THE MOUNTING SCREWS.
OVER-TIGHTENING THE MOUNTING SCREWS MAY RESULT IN
DAMAGE TO MOUNTING PLATE OR HARDWARE.



60-180 min



Cutting Not
Required



Drilling Not
Required



REMOVE CONTENTS FROM BOX. VERIFY ALL PARTS ARE PRESENT.



support@trailfx.com



1 866 638 4870



READ INSTRUCTIONS CAREFULLY BEFORE STARTING INSTALLATION.



Limited Lifetime Warranty

PARTS LIST

SL.No	Part Description	SL.No	Part Description
1	Drivers Side Mirror	2	Passenger Side Mirror

1



2

TOOLS NEEDED

10 mm Socket (A)	Ratchet (D)
Bezel Removal Tool (B)	T20 Torx Driver (E)
Flat Edge Screw Driver (C)	



E



D



A



C



B

Installation Instruction

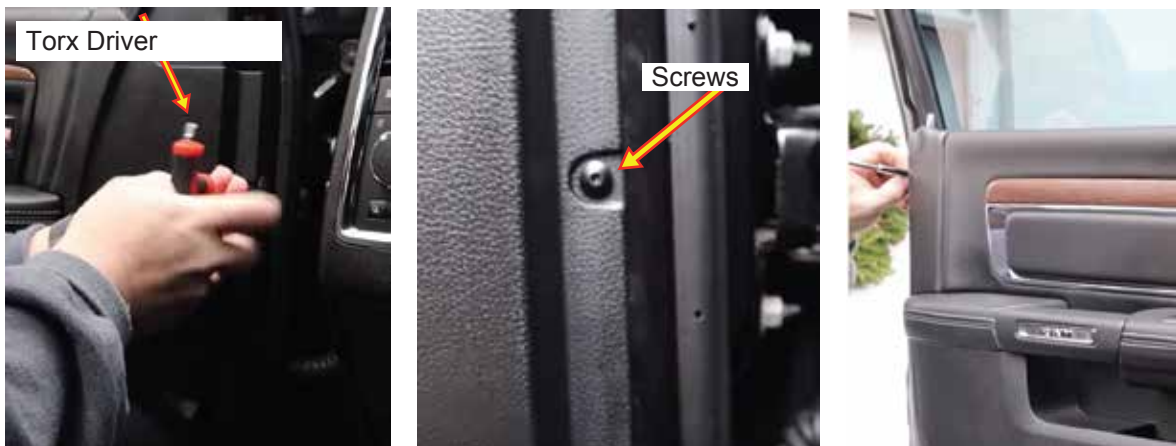
1. Trim panel is attached to door by two clips. See figure 1. Use a trim panel tool or flat edge screw driver to pop trim panel clips out from the slots in the door. See figure 1.

Fig 1



2. Remove all the 6 Torx head screws which are located on the outside perimeter of the door using a Torx Driver. See figure 2.

Fig 2



3. Using flat edge screw driver remove the plastic cover located behind the door handle, Insert the flat edge screw driver in the notch of cover and pop out the plastic cover. See figure 3.

Fig 3



4. Remove the screw behind the door handle using a Phillips head screw driver. See figure 4.

Fig 4



5. After removing the screws pull the door panel towards you by lifting the door by hand. See below images.



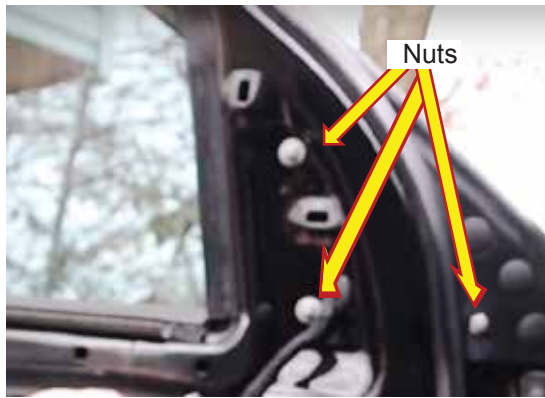
6. Unplug any harness connected to the door panel once done door panel completely comes off. See below images.



7. Unplug the OEM mirror electrical wire from the socket.

- Remove the 3 nuts using 10mm socket and ratchet. See figure 5.

Fig 5



NOTE: Ensure one person holds the mirror from the outside when loosening the nuts to prevent the mirror from falling.



- After all nuts are removed and wire connection is unplugged, slowly remove the OEM mirror from the vehicle.
- Slide the mirror studs of the new TrailFX tow mirror into the three holes in door.
- Re-install the washers and nuts using a 10mm socket and ratchet. Once mirror is secure, plug in wiring connection.
- Insert the New TrailFX mirror wiring harness in to socket.
- Re-install the plastic trim panel by inserting the plastic clips of the cover into the slot and push into place
- After installation, check all mirror functions to make sure they are working properly.
- Re-Install the door panel

PRODUCT CARE

1. Periodically check the product to ensure all fasteners are tightened and components are intact.
2. Regular waxing is recommended to protect the finish of the product.
3. **Use ONLY Non-Abrasive automotive wax.** Use of any soap, polish or wax that contains an abrasive is detrimental and can scratch the finish leading to corrosion, ensure the cloth used for wiping is clean and soft.

FAQ's

1. **Tow mirrors are loose after installation.**
Please ensure that all required mounting brackets / hardware's are installed & tightened correctly.
2. **Missing / Excess Hardware.**
Re-check hardware count as per the part list.

Check out these other TrailFX Products!!

www.TrailFX.com



FULL FRONT REPLACEMENT BUMPER



REAR REPLACEMENT BUMPER



3.5 INCH OVAL BULL BAR



6" OVAL BENT STEP BAR

Keystone Automotive Operations Inc. (KAO) warrants this product to be free of defects in material and workmanship at the time of purchase by the original retail consumer. KAO disclaims any other warranties, express or implied, including the warranty of fitness for a particular purpose or an intended use. If the product is found to be defective, KAO may replace or repair the product at our option, when the product is returned prepaid, with proof of purchase. Alteration to, improper installation, or misuse of this product voids the warranty. KAO's liability is limited to repair or replacement of products found to be defective, and specifically excludes liability for any incidental or consequential loss or damage.